

Supporting Information

Malaria-Infected Mice Are Cured by a Single Oral Dose of New Dimeric Trioxane Sulfones Which Are Also Selectively and Powerfully Cytotoxic to Cancer Cells

Andrew S. Rosenthal,^a Xiaochun Chen,^b Jun O. Liu,^b Diana C. West,^c Paul J. Hergenrother,^c Theresa A. Shapiro,^{d,e} and Gary H. Posner,^{*a,e}

^aDepartment of Chemistry, School of Arts and Sciences, The Johns Hopkins University, 3400 North Charles Street, Baltimore, Maryland 21218-2685; ^bDivision of Pharmacology, Department of Medicine, School of Medicine, The Johns Hopkins University, Baltimore, Maryland 21205; ^cDepartment of Chemistry, University of Illinois, Urbana, IL 61801; ^dDivision of Clinical Pharmacology, Department of Medicine, School of Medicine, The Johns Hopkins University, Baltimore, Maryland 21205 ^eThe Johns Hopkins Malaria Research Institute, Bloomberg School of Public Health, Baltimore, Maryland 21205

Table of Contents

Spectral Data for Compound 3	S2-S3
Spectral Data for Compound 4a	S4-S7
Spectral Data for Compound 4b	S8-S11
Spectral Data for Compound 4c	S12-S15
Spectral Data for Compound 4d	S16-S19
Spectral Data for Compound 4e	S20-S23
Spectral Data for Compound 4f	S24-S27

7.261
7.260
7.261
7.371
7.304
7.299
7.297
7.227
7.914
7.902
7.885
7.877
7.818
7.807
7.793
7.782
7.715
7.602
7.584
7.354
7.329
7.318
7.307
7.295
7.283
7.243
7.204
7.036
7.000
7.913
7.904
7.897
7.876
7.869
7.862
7.853
7.827
7.818
7.807
7.800
7.789
7.778
7.766
7.756
7.705
7.695
7.677
7.665
7.632
7.605
7.593
7.571
7.557
7.546
7.508
7.502
7.480
7.465
7.460
7.448
7.414
7.314
7.298
7.290
7.273
7.257
7.250
7.239
7.237
7.231
7.992
7.963
7.948
7.921
7.882
7.863

Current Data Parameters
 NAME ASR-04-143
 EXPNO 1
 PROCNO 1

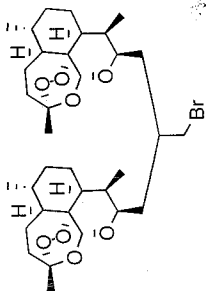
F2 - Acquisition Parameters

Date_ 20071019
 Time 16.40
 INSTRUM spect
 PROBHD 5 mm PABBO BB-
 PULPROG zg30
 TD 65536
 SOLVENT CDCl3
 NS 16
 DS 2
 SWH 8278.146 Hz
 FIDRES 0.126314 Hz
 AQ 3.9584243 sec
 RG 161.3
 DW 60.400 usec
 DE 6.00 usec
 TE 297.1 K
 D1 1.00000000 sec
 TD0 1

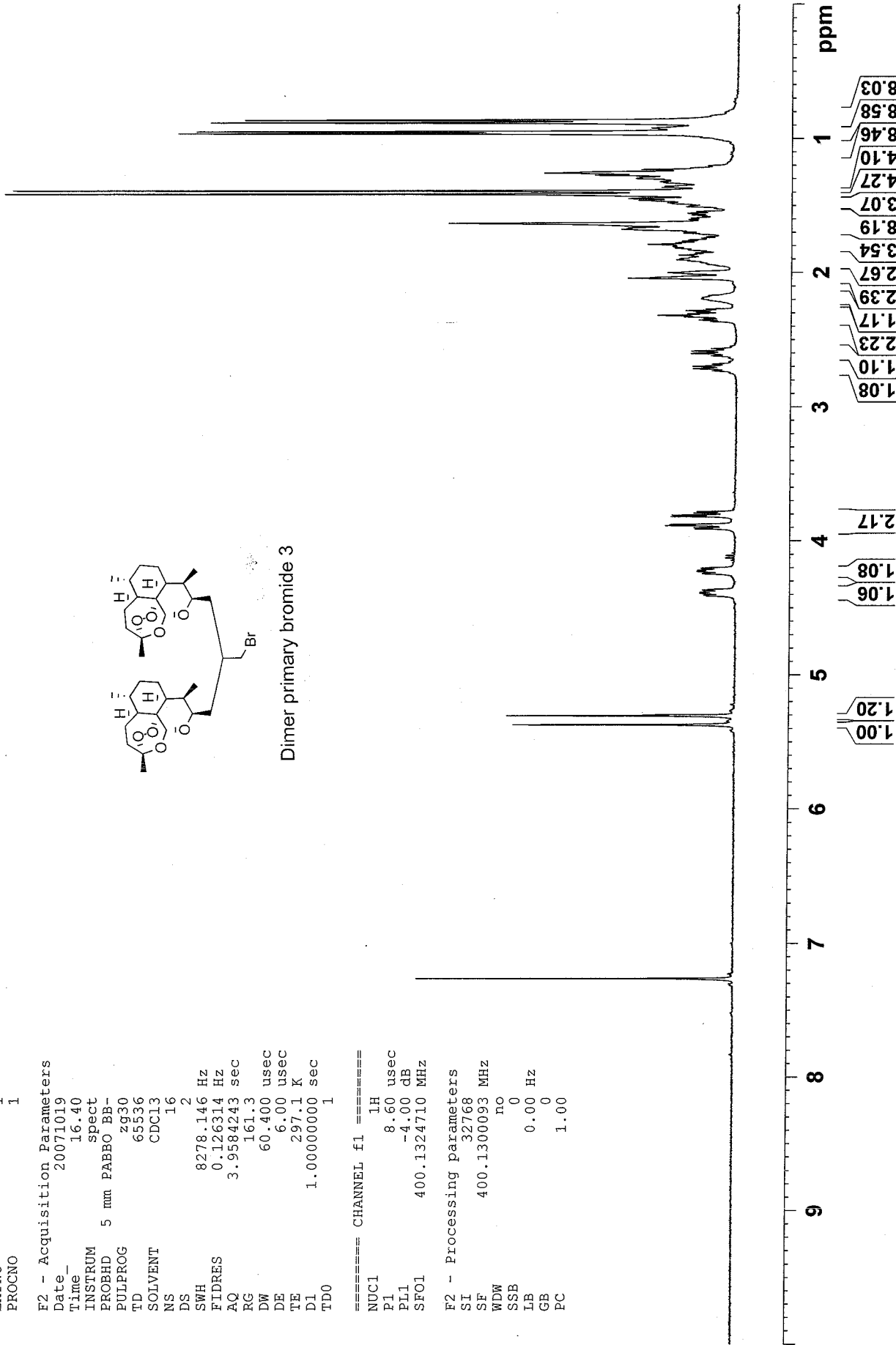
==== CHANNEL f1 =====
 NUC1 1H
 P1 8.60 usec
 PL1 -4.00 dB
 SF01 400.1324710 MHz

F2 - Processing parameters

SI 32768
 SF 400.1300093 MHz
 WDW no
 SSB 0
 LB 0.00 Hz
 GB 0
 PC 1.00



Dimer primary bromide 3



```

Current Data Parameters
NAME      ASR-04-147.10
EXPNO    2
PROCNO   1

F2 - Acquisition Parameters
Date_    20080724
Time     9.32
INSTRUM  spect
PROBHD   5 mm PABBO BB-
PULPROG  zgpg30
TD       65536
SOLVENT  cdcl3
NS       226
DS       4
SWH      23980.814 Hz
FIDRES   0.365918 Hz
AQ       1.3664756 sec
RG       812.7
DE       20.850 use
TE       6.00 use
TE       296.1 K
d11      2.00000000 sec
d12      0.03000000 sec
DELTA    1.89999998 sec
TD0      .1

===== CHANNEL f1 =====
NUC1     13C
P1       8.25 use
PL1      -3.00 dB
SFO1     100.6228298 MHz

===== CHANNEL f2 =====
CPDPRG2  waltz16
NUC2     1H
PCPD2    80.00 use
PL2      -4.00 dB
PL12     14.00 dB
PL13     14.00 dB
SFO2     400.1316005 MHz

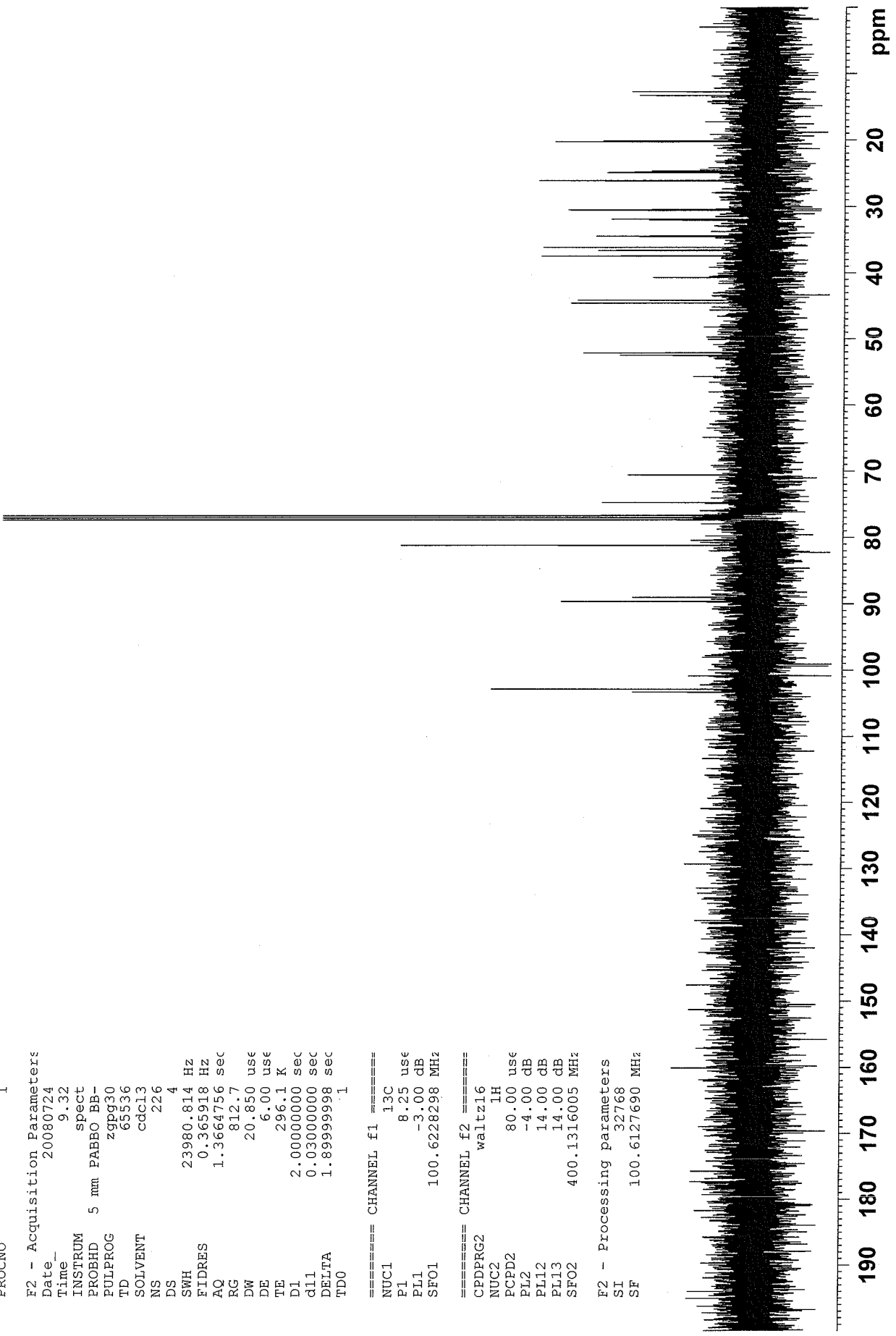
F2 - Processing parameters
SI       32768
SF       100.6127690 MHz

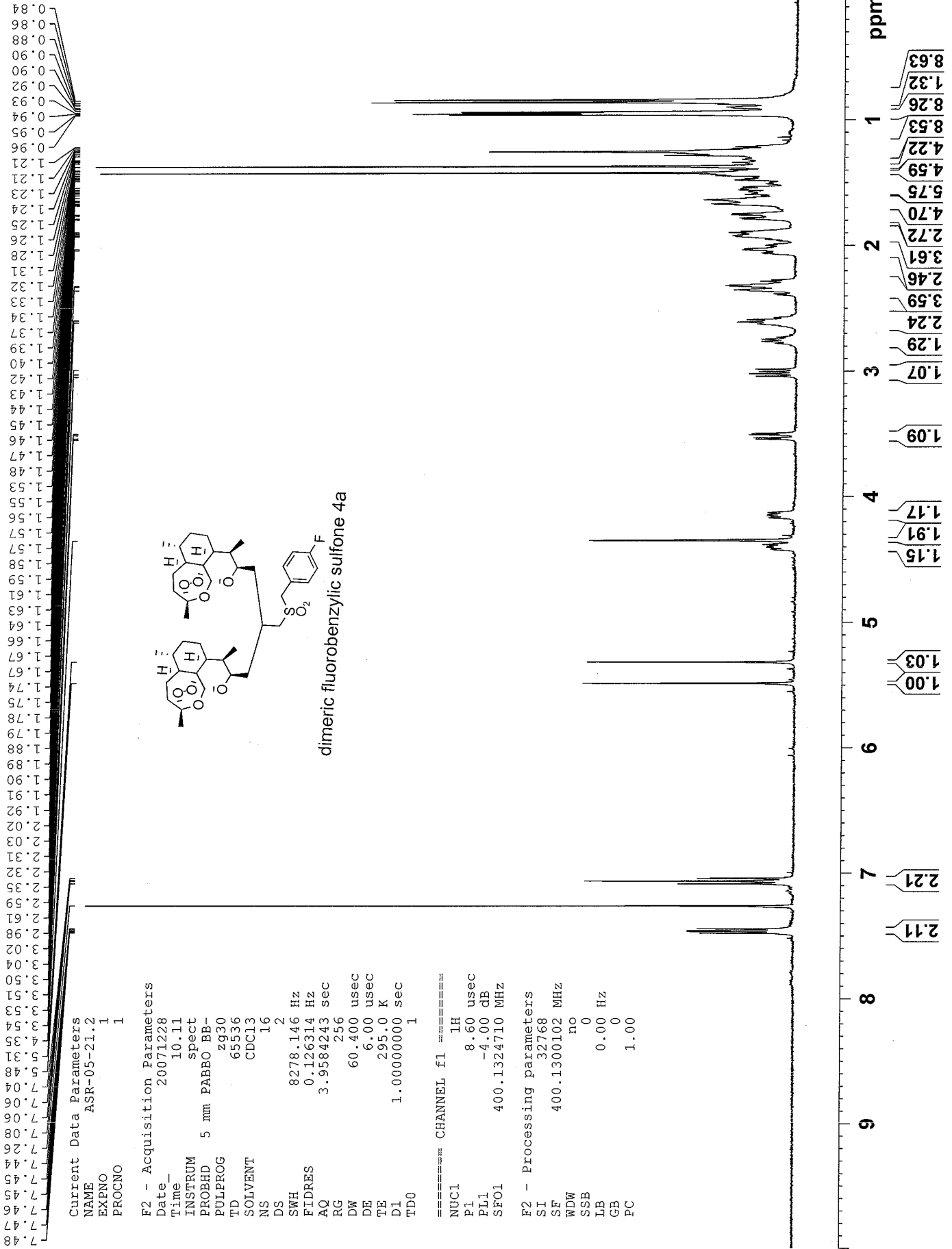
```

```

103.33
89.64
89.01
81.18
77.35
77.03
76.71
74.73
70.59
52.48
52.12
44.56
44.12
40.71
37.47
37.44
36.64
36.59
36.15
34.52
34.44
32.05
31.91
30.58
30.49
26.14
26.09
24.92
24.88
24.78
24.66
20.25
20.12
13.29

```





Current Data Parameters

NAME ASR-05-21.2
 EXPNO 1
 PROCNO 1

F2 - Acquisition Parameters

Date_ 20071228
 Time 10.11
 INSTRUM spect
 PROBHD 5 mm PABBO BB-
 PULPROG zg30
 TD 65536
 SOLVENT CDCl3
 NS 16
 DS 2
 SWH 8278.146 Hz
 FIDRES 0.126314 Hz
 AQ 3.9584243 sec
 RG 256
 DW 60.400 usec
 DE 6.00 usec
 TE 295.0 K
 D1 1.00000000 sec
 TD0 1

==== CHANNEL f1 =====

NUC1 1H
 P1 8.60 usec
 PL1 -4.00 dB
 SF01 400.1324710 MHz

F2 - Processing parameters

SI 32768
 SF 400.1300102 MHz
 WDW no
 SSB 0
 LB 0.00 Hz
 GB 0
 PC 1.00

Current Data Parameters
 NAME ASR-05-21.2
 EXENO 2
 PROCNO 1

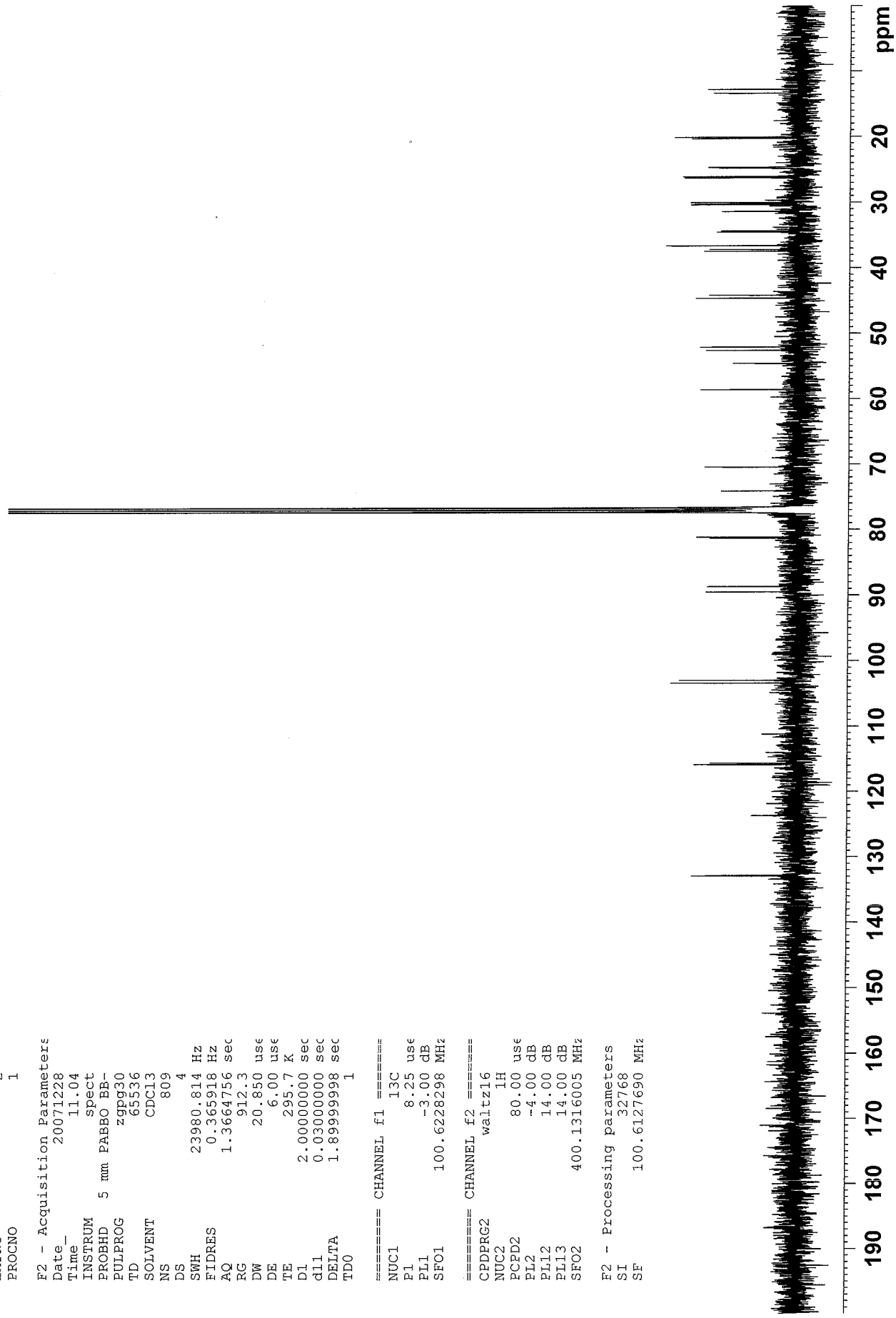
F2 - Acquisition Parameters
 Date 20071228
 Time 11.04
 INSTRUM spect
 PROBHD 5 mm PABBO BB-
 PULPROG zgpg30
 TD 65536
 SOLVENT CDCl3
 NS 809
 DS 4
 SWH 23980.814 Hz
 FIDRES 0.365918 Hz
 AQ 1.3664756 sec
 RG 912.3
 DW 20.850 use
 DE 6.00 use
 TE 295.7 K
 d1 2.00000000 sec
 d11 0.03000000 sec
 DELTA 1.89999998 sec
 TD0 1

==== CHANNEL f1 =====
 NUC1 13C
 P1 8.25 use
 PL1 -3.00 dB
 SFO1 100.6228298 MHz

==== CHANNEL f2 =====
 CPDPRG2 waltz16
 NUC2 1H
 PCPD2 80.00 use
 PL2 -4.00 dB
 PLI2 14.00 dB
 PLI3 14.00 dB
 SFO2 400.1316005 MHz

F2 - Processing parameters
 SI 32768
 SF 100.6127690 MHz

132.97
 123.70
 115.90
 115.90
 103.44
 103.02
 89.53
 88.71
 81.35
 81.19
 77.34
 77.23
 77.02
 76.71
 74.14
 70.48
 58.63
 54.62
 52.63
 52.11
 44.64
 44.19
 37.47
 37.22
 36.64
 34.56
 34.40
 31.40
 30.38
 30.26
 30.05
 26.30
 26.11
 24.82
 24.69
 20.30
 20.11
 13.40
 12.81

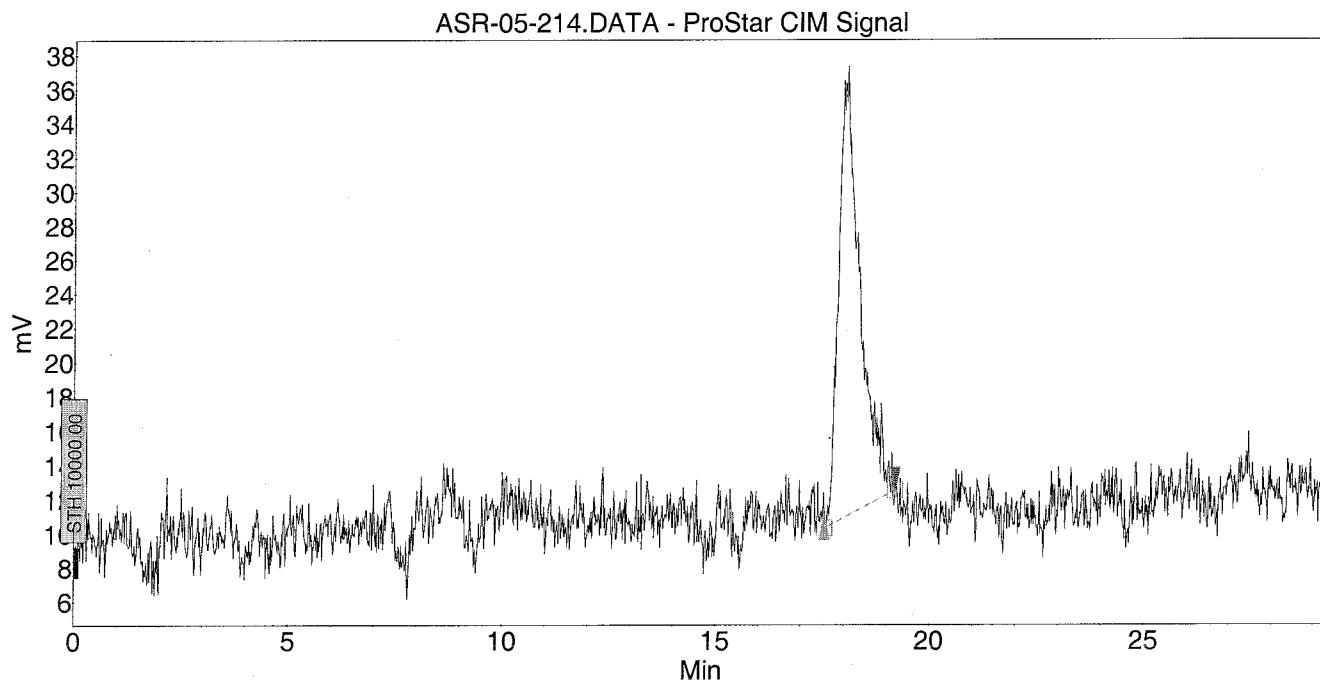


4a

Chromatogram : ASR-05-214_channel1

System : HPLC System
Method : isocratic30%
User : Andrew Rosenthal

Acquired : 8/12/2008 2:33:47 PM
Processed : 8/12/2008 3:05:08 PM
Printed : 8/12/2008 3:05:25 PM



Peak results :

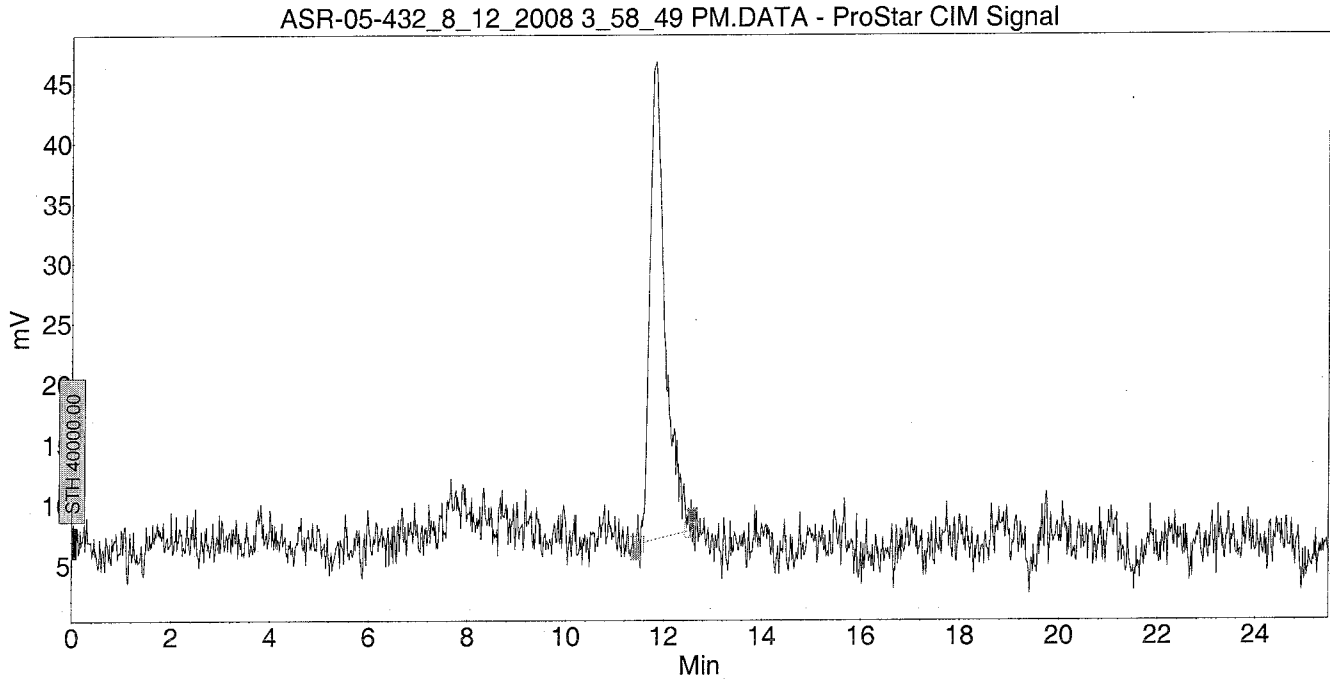
Index	Name	Time [Min]	Quantity [% Area]	Height [mV]	Area [mV.Min]	Area % [%]
1	UNKNOWN	18.03	100.00	25.3	15.0	100.000
Total			100.00	25.3	15.0	100.000

4a

Chromatogram : ASR-05-432_8_12_2008 3_58_49 PM_channel1

System : HPLC System
Method : isocratic40%
User : Andrew Rosenthal

Acquired : 8/12/2008 3:59:16 PM
Processed : 8/12/2008 4:25:51 PM
Printed : 8/12/2008 4:28:02 PM



Peak results :

Index	Name	Time [Min]	Quantity [% Area]	Height [mV]	Area [mV.Min]	Area % [%]
1	UNKNOWN	11.80	100.00	39.3	14.1	100.000
Total			100.00	39.3	14.1	100.000

7.971
7.967
7.955
7.950
7.496
7.474
7.260
5.442
5.424
5.294
4.760
5.630
3.617
3.594
3.581
3.343
3.307
3.290
2.680
2.662
2.550
2.533
2.330
2.323
2.302
2.297
2.094
2.042
2.031
2.019
2.011
1.996
1.911
1.902
1.893
1.885
1.876
1.868
1.793
1.781
1.767
1.756
1.750
1.735
1.728
1.716
1.640
1.631
1.623
1.614
1.607
1.596
1.578
1.563
1.543
1.537
1.438
1.422
1.407
1.386
1.374
1.365
1.346
1.246
1.242
1.228
1.221
1.207
1.193
0.953
0.945
0.938
0.929
0.908
0.899
0.832
0.825
0.813
0.806

Current Data Parameters
 NAME ASR-05-143.2
 EXPNO 1
 PROCNO 1

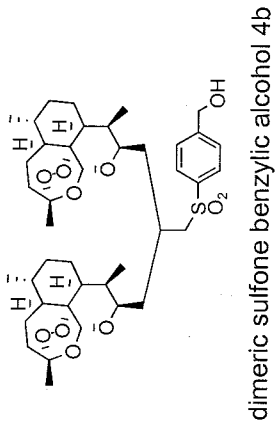
F2 - Acquisition Parameters

Date 20080812
 Time 9.00
 INSTRUM spect
 PROBHD 5 mm PABBO BB-
 PULPROG zg30
 TD 65536
 SOLVENT CDCl3
 NS 16
 DS 2
 SWH 8278.146 Hz
 FIDRES 0.126314 Hz
 AQ 3.9584243 sec
 RG 45.3
 DW 60.400 usec
 DE 6.00 usec
 TE 295.9 K
 D1 1.00000000 sec
 TD0 1

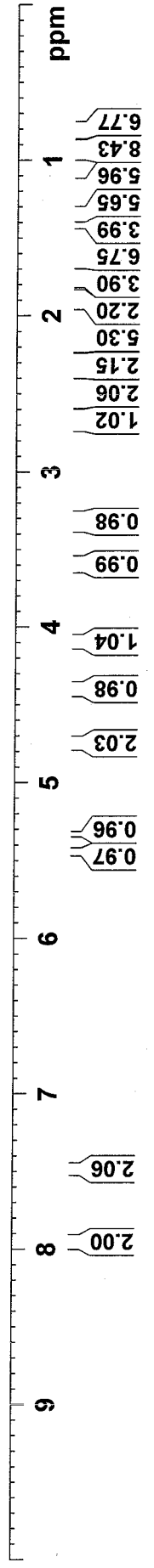
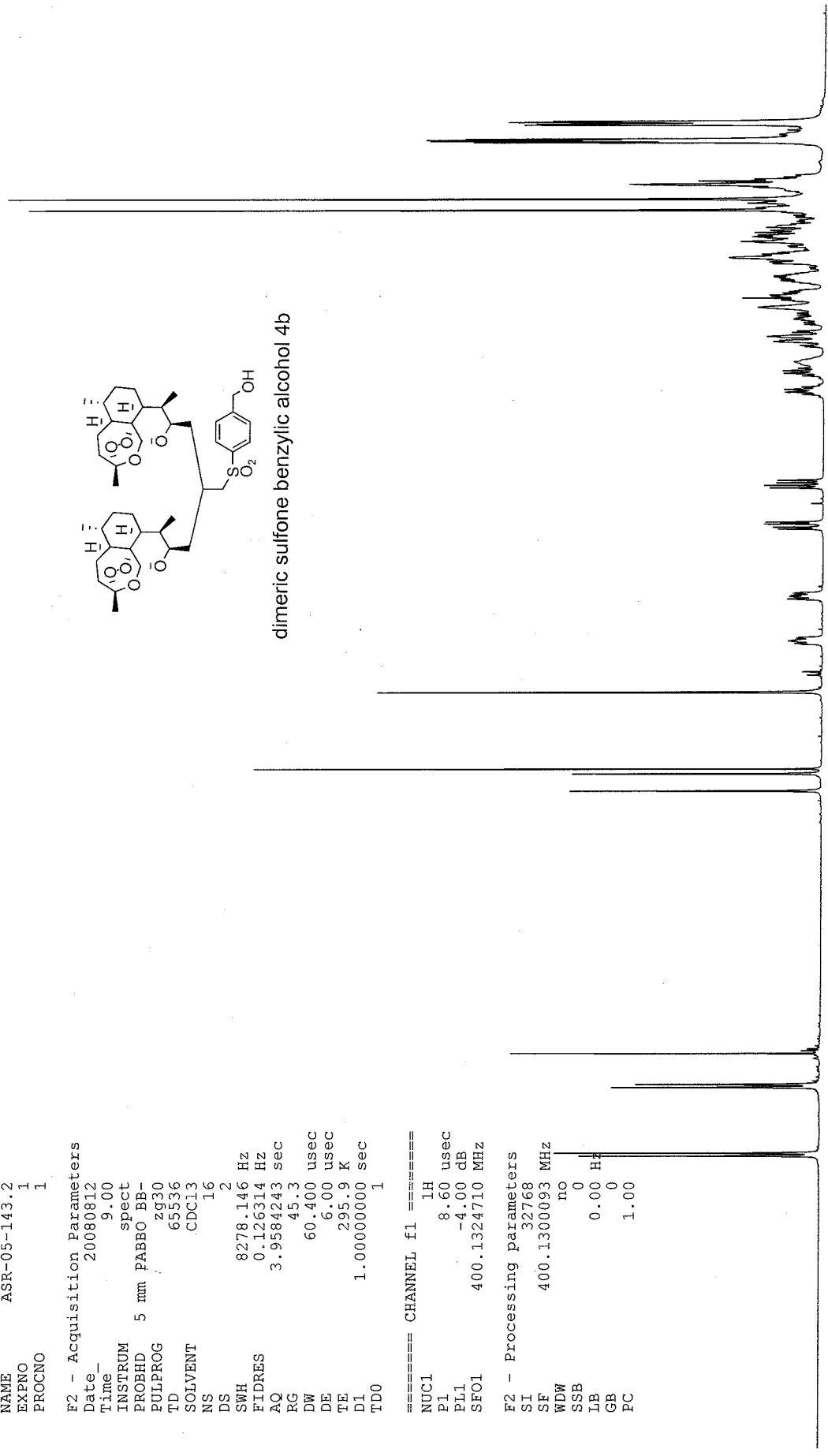
==== CHANNEL f1 =====
 NUC1 1H
 P1 8.60 usec
 PL1 -4.00 dB
 SF01 400.1324710 MHz

F2 - Processing parameters

SI 32768
 SF 400.1300093 MHz
 WDW no
 SSB 0
 LB 0.00 Hz
 GB 0
 PC 1.00



dimeric sulfone benzylic alcohol 4b



Current Data Parameters
 NAME ASR-05-49-lower si
 EXPNO 2
 PROCNO 1

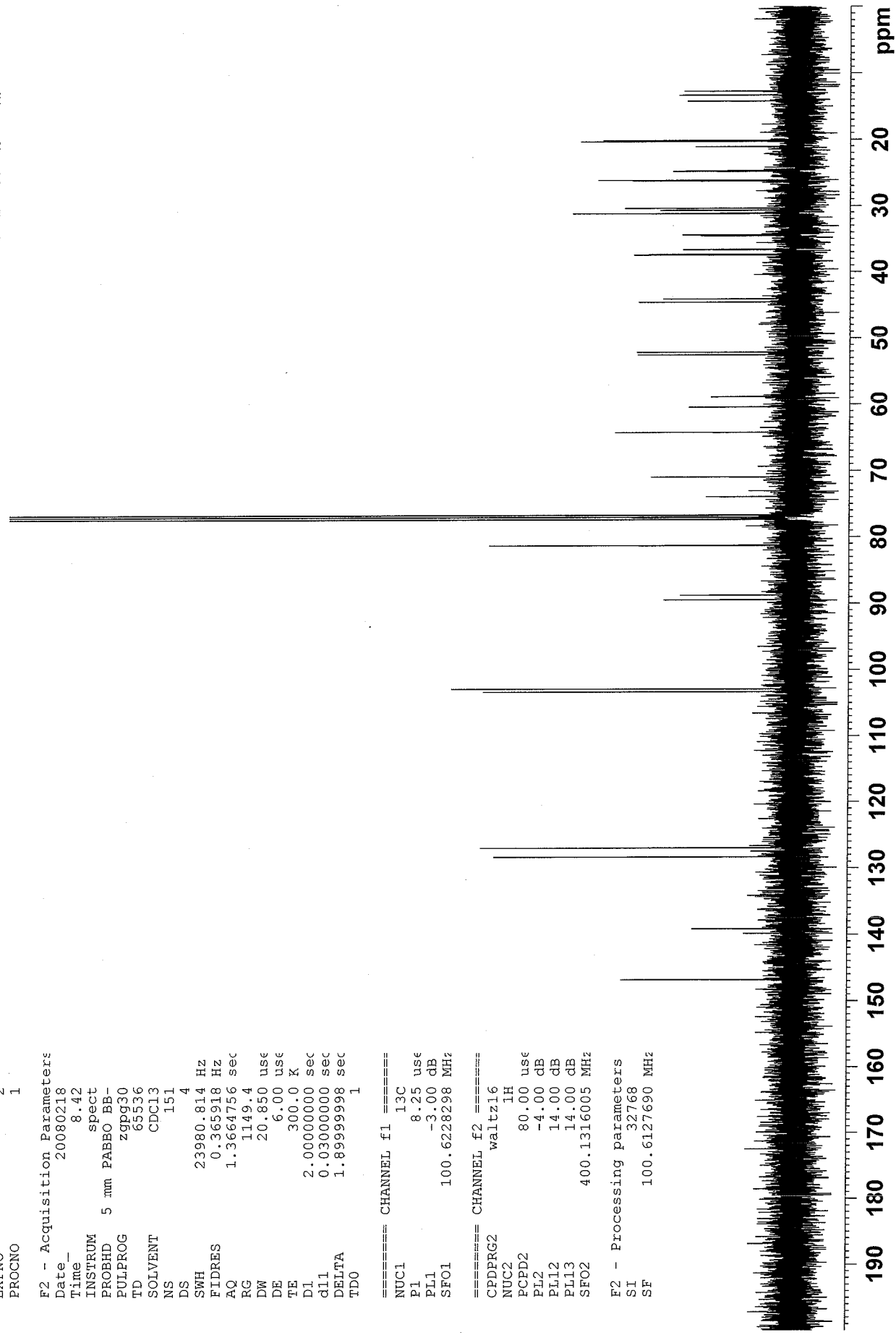
F2 - Acquisition Parameters
 Date_ 20080218
 Time_ 8.42
 INSTRUM spect
 PROBHD 5 mm PABBO BB-
 PULPROG zgpg30
 TD 65536
 SOLVENT CDCl3
 NS 151
 DS 4
 SWH 23980.814 Hz
 FIDRES 0.365918 Hz
 AQ 1.3664756 sec
 RG 1149.4
 DW 20.850 usec
 DE 6.00 usec
 TE 300.0 K
 D1 2.00000000 sec
 d11 0.03000000 sec
 DELTA 1.89999998 sec
 TD0 1

==== CHANNEL f1 =====
 NUC1 13C
 P1 8.25 usec
 PL1 -3.00 dB
 SFO1 100.6228298 MHz

==== CHANNEL f2 =====
 CPDPRG2 waltz16
 NUC2 1H
 PCPD2 80.00 usec
 PL2 -4.00 dB
 PLI2 14.00 dB
 PLI3 14.00 dB
 SFO2 400.1316005 MHz

F2 - Processing parameters
 SI 32768
 SF 100.6127690 MHz

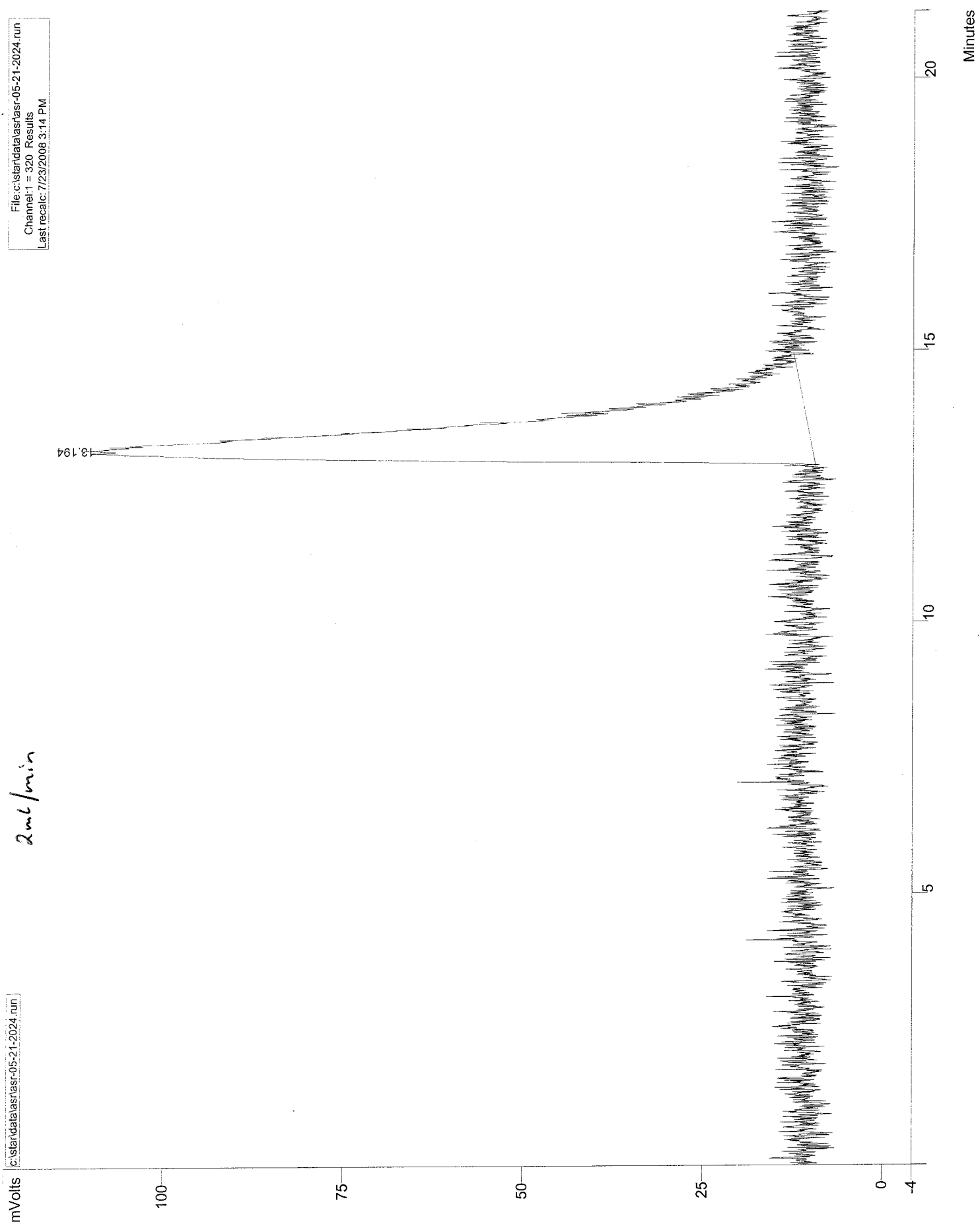
146.84
139.18
128.34
126.98
103.35
102.91
89.47
88.76
81.29
81.23
77.36
77.05
76.73
73.94
70.95
64.24
60.41
58.87
52.53
52.13
44.57
44.08
37.43
37.34
36.64
36.60
34.54
34.39
31.16
31.11
30.68
30.37
26.23
26.12
24.80
24.75
21.05
20.27
20.12
14.20
13.30
12.70



46 50% EtOAc/Hex iso.
2ml/min

File: c:\standata\asr\asr-05-21-2024.run
Channel: 1 = 320 Results
Last recal: 7/23/2008 3:14 PM

c:\standata\asr\asr-05-21-2024.run

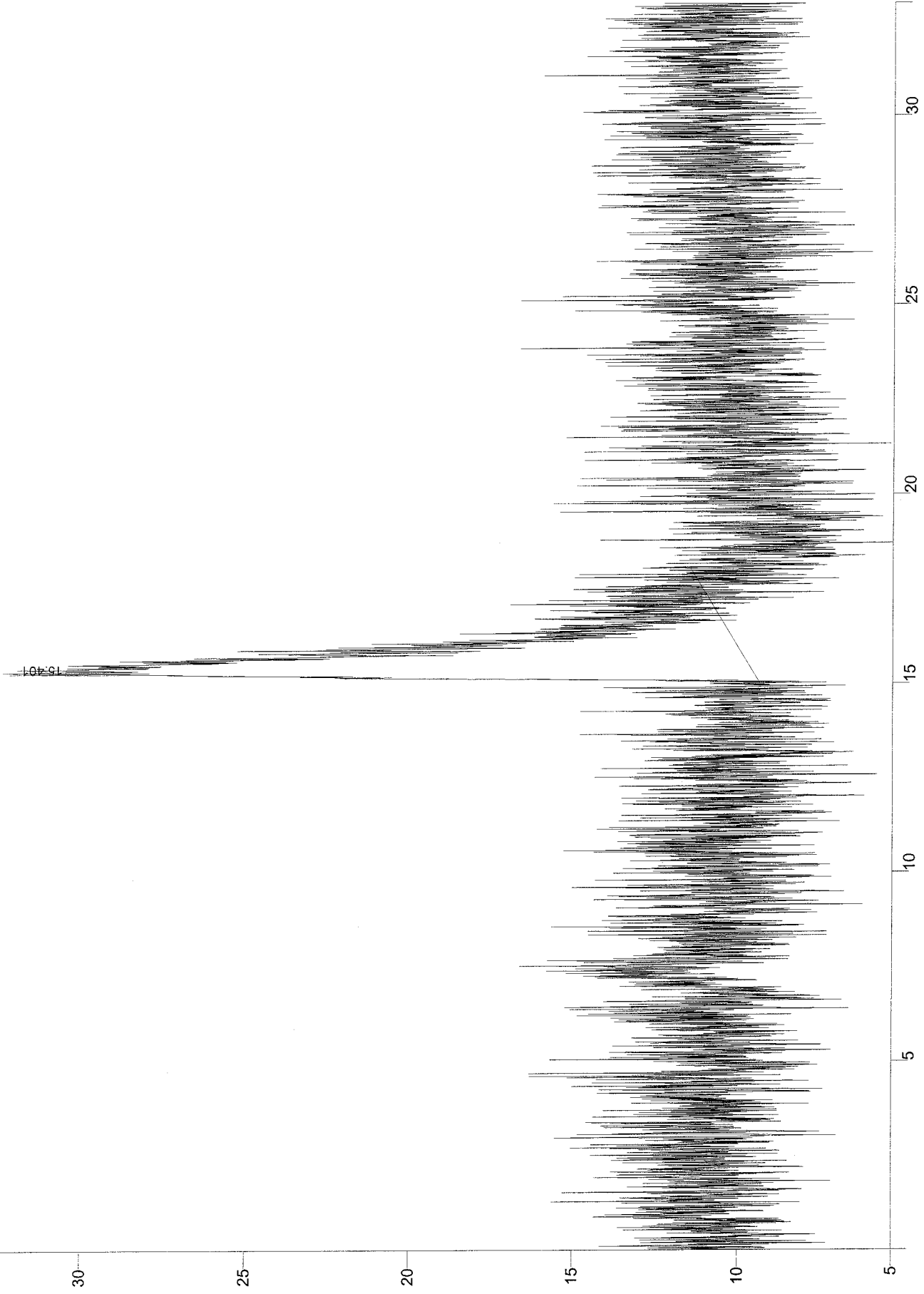


c:\standard\data\asr-05-21-2026.run

File: c:\standard\data\asr-05-21-2026.run
Channel: 1 = 320 Results
Last recalc: 7/23/2008 4:32 PM

45
40% EtOAc / Hex
2 ml/min

mVolts



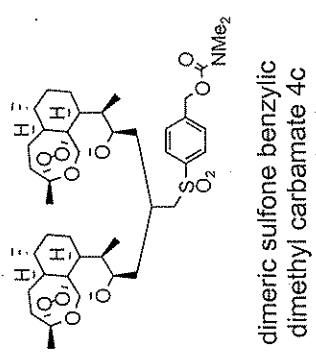
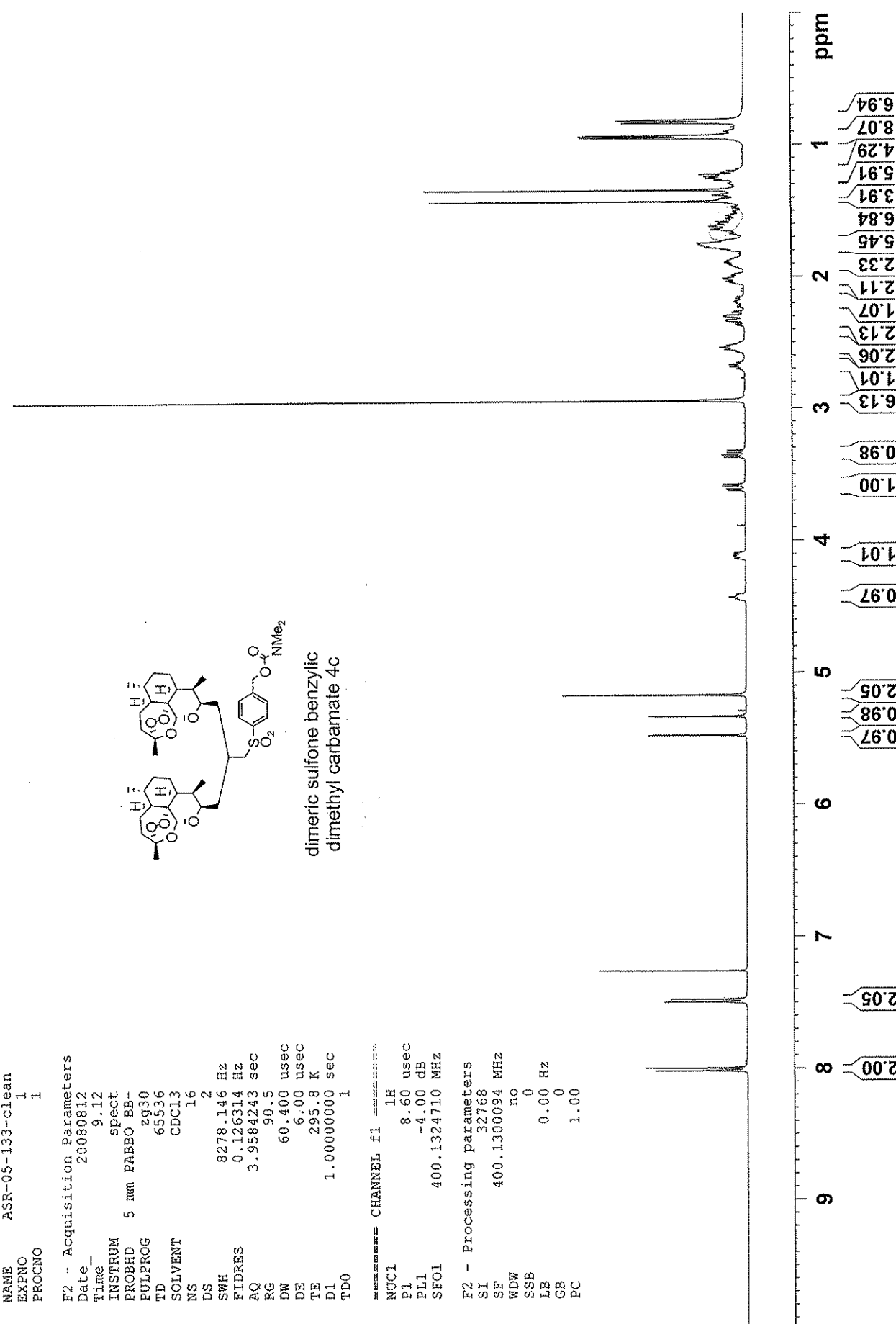
Minutes

Current Data Parameters
 NAME ASR-05-133-clean
 EXPNO 1
 PROCNO 1

F2 - Acquisition Parameters
 Date_ 20080812
 Time_ 9.12
 INSTRUM spect
 PROBHD 5 mm PABBO BB-
 PULPROG zg30
 TD 65536
 SOLVENT CDC13
 NS 16
 DS 2
 SWH 8278.146 Hz
 FIDRES 0.126314 Hz
 AQ 3.9584243 sec
 RG 90.5
 DW 60.400 usec
 DE 6.00 usec
 TE 295.8 K
 D1 1.00000000 sec
 TD0 1

===== CHANNEL f1 =====
 NUC1 1H
 P1 8.60 usec
 PL1 -4.00 dB
 SFO1 400.1324710 MHz

F2 - Processing parameters
 SI 32768
 SF 400.1300094 MHz
 WDW no
 SSB 0
 LB 0.00 Hz
 GB 0
 PC 1.00



142.68
 139.91
 128.44
 127.94
 103.31
 102.89
 89.48
 88.79
 81.31
 81.24
 77.34
 77.23
 77.02
 76.71
 73.96
 70.99
 65.95
 58.86
 52.54
 52.14
 44.58
 44.10
 37.43
 37.33
 36.65
 36.63
 34.56
 34.41
 31.21
 31.12
 30.71
 30.40
 26.24
 26.13
 24.81
 24.77
 24.74
 24.67
 20.27
 20.13
 13.30
 12.70

```

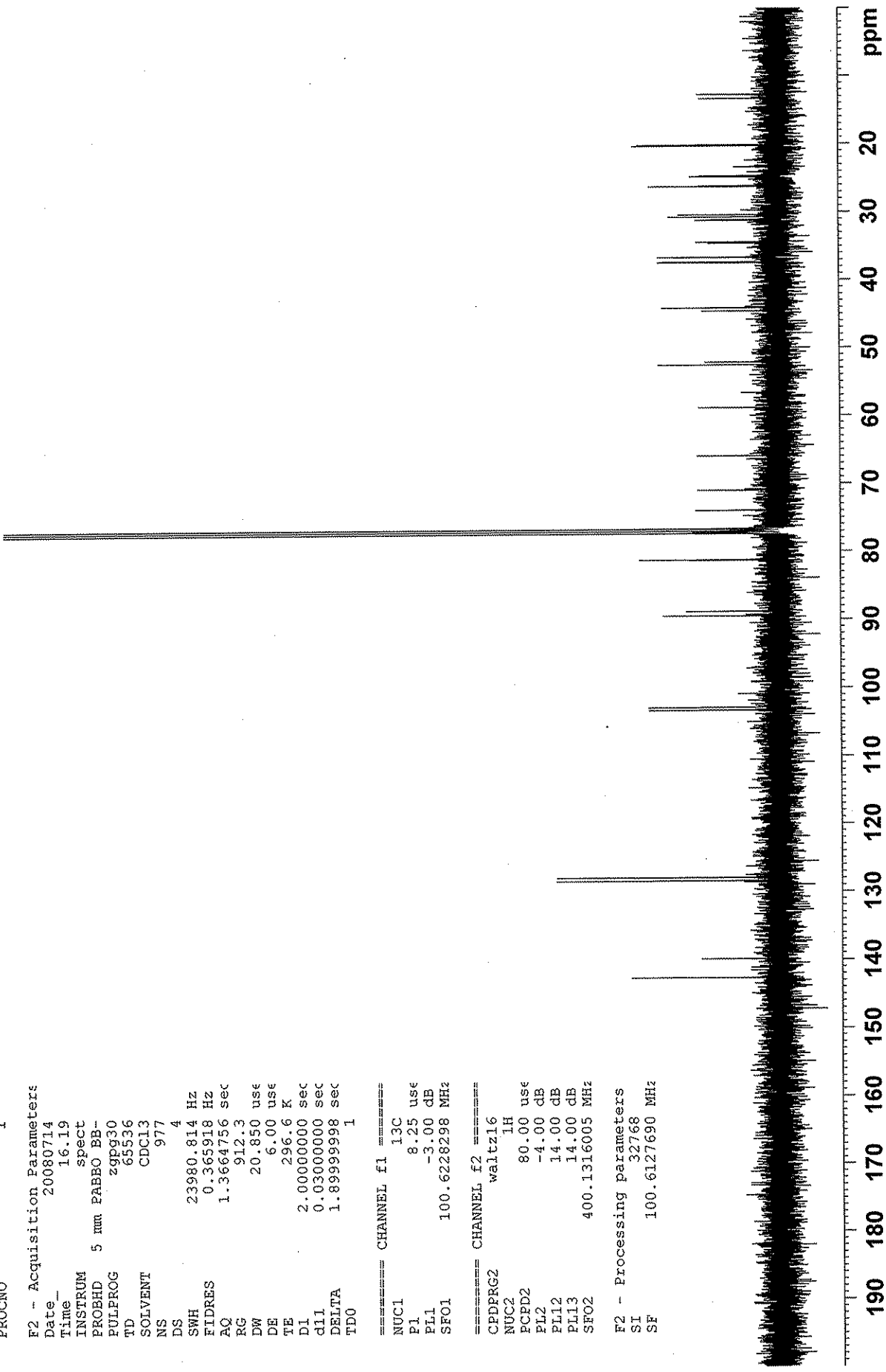
Current Data Parameters
NAME ASR-05-133
EXENO 2
PROCNO 1

F2 - Acquisition Parameters
Date_ 20080714
Time_ 16.19
INSTRUM spect
PROBHD 5 mm PABBO BB-
PULPROG zgpg30
TD 65536
SOLVENT CDCl3
NS 977
DS 4
SWH 23980.814 Hz
FIDRES 0.365918 Hz
AQ 1.3664756 sec
RG 912.3
DW 20.850 usec
DE 6.00 usec
TE 296.6 K
d1 2.0000000 sec
d11 0.0300000 sec
DELTA 1.89999998 sec
TD0 1

===== CHANNEL f1 =====
NUC1 13C
P1 8.25 usec
PL1 -3.00 dB
SFO1 100.6228298 MHz

===== CHANNEL f2 =====
CPDPRG2 waitz16
NUC2 1H
PCPD2 80.00 usec
PL2 -4.00 dB
PL12 14.00 dB
PL13 14.00 dB
SFO2 400.1316005 MHz

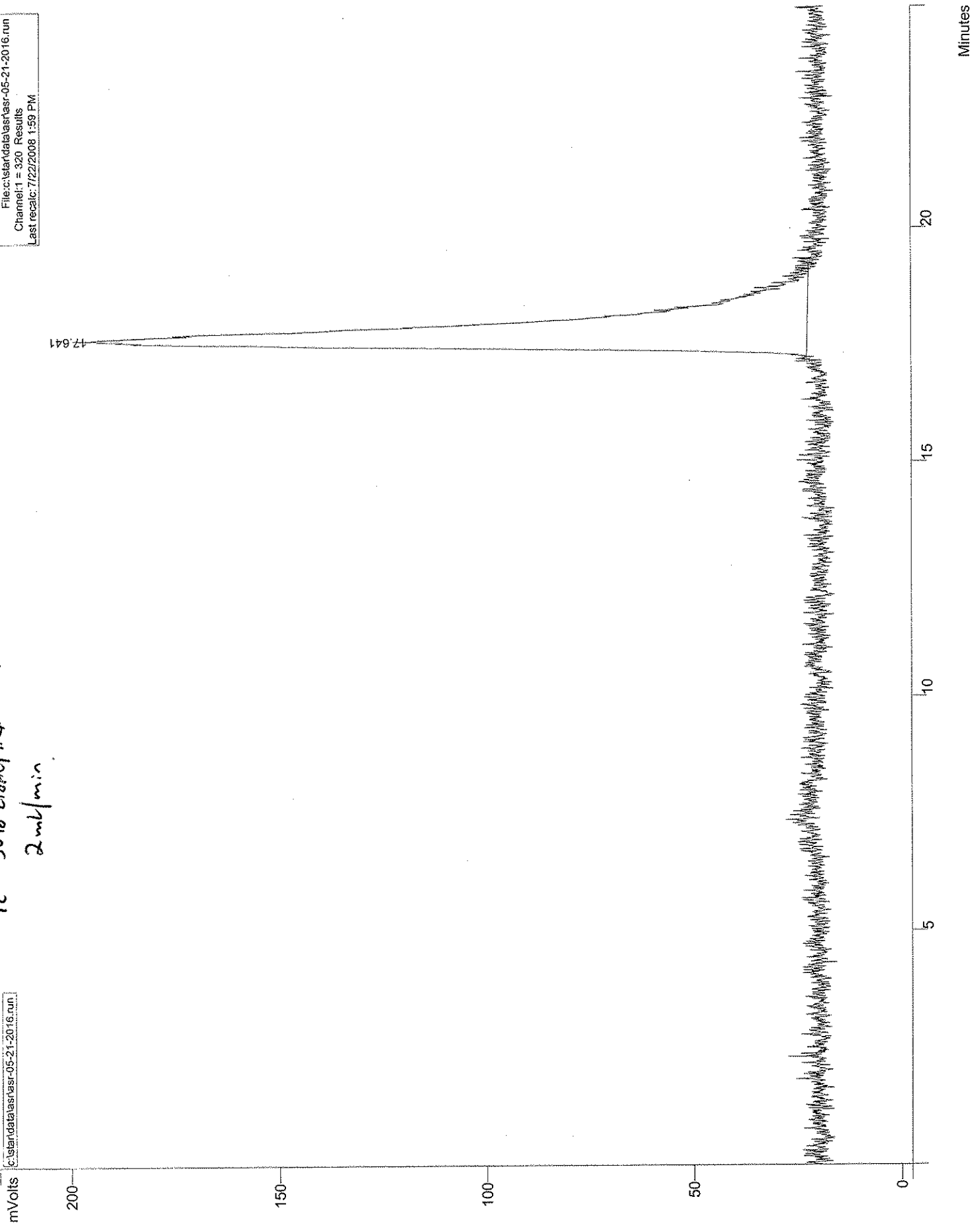
F2 - Processing parameters
SI 32768
SF 100.6127690 MHz
  
```



4c 50% EtOH/Hex iso
2ml/min

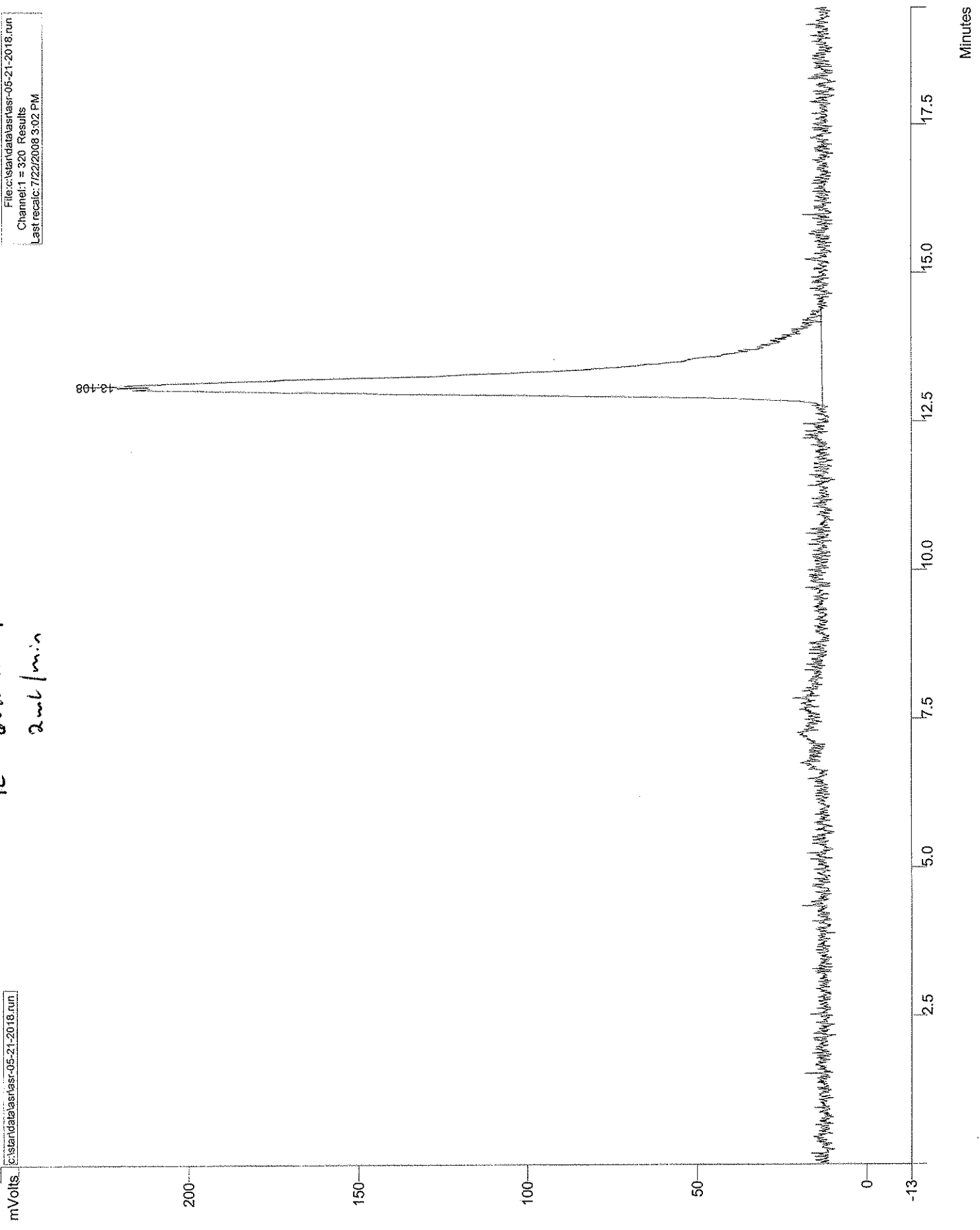
c:\stan\data\asr\asr-05-21-2016.run

File: c:\stan\data\asr\asr-05-21-2016.run
Channel: 1 = 320 Results
Last recal: 7/22/2008 1:59 PM



File: c:\stan\data\asr\asr-05-21-2018.run
Channel: 1 = 320 Results
Last recal: 7/22/2008 3:02 PM

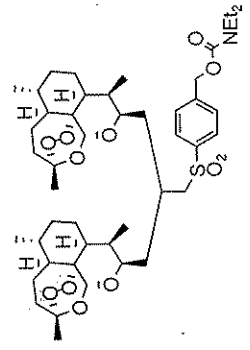
4c 60% EtOAc/Hex iso.
2ml/min



8.03
8.01
7.49
7.47
7.26
7.18
7.14
7.12
7.09
7.06
7.04
7.02
6.99
6.97
6.94
6.92
6.89
6.87
6.84
6.82
6.72
0.70

Current Data Parameters
 NAME ASR-05-119.3
 EXPNO 1
 PROCNO 1

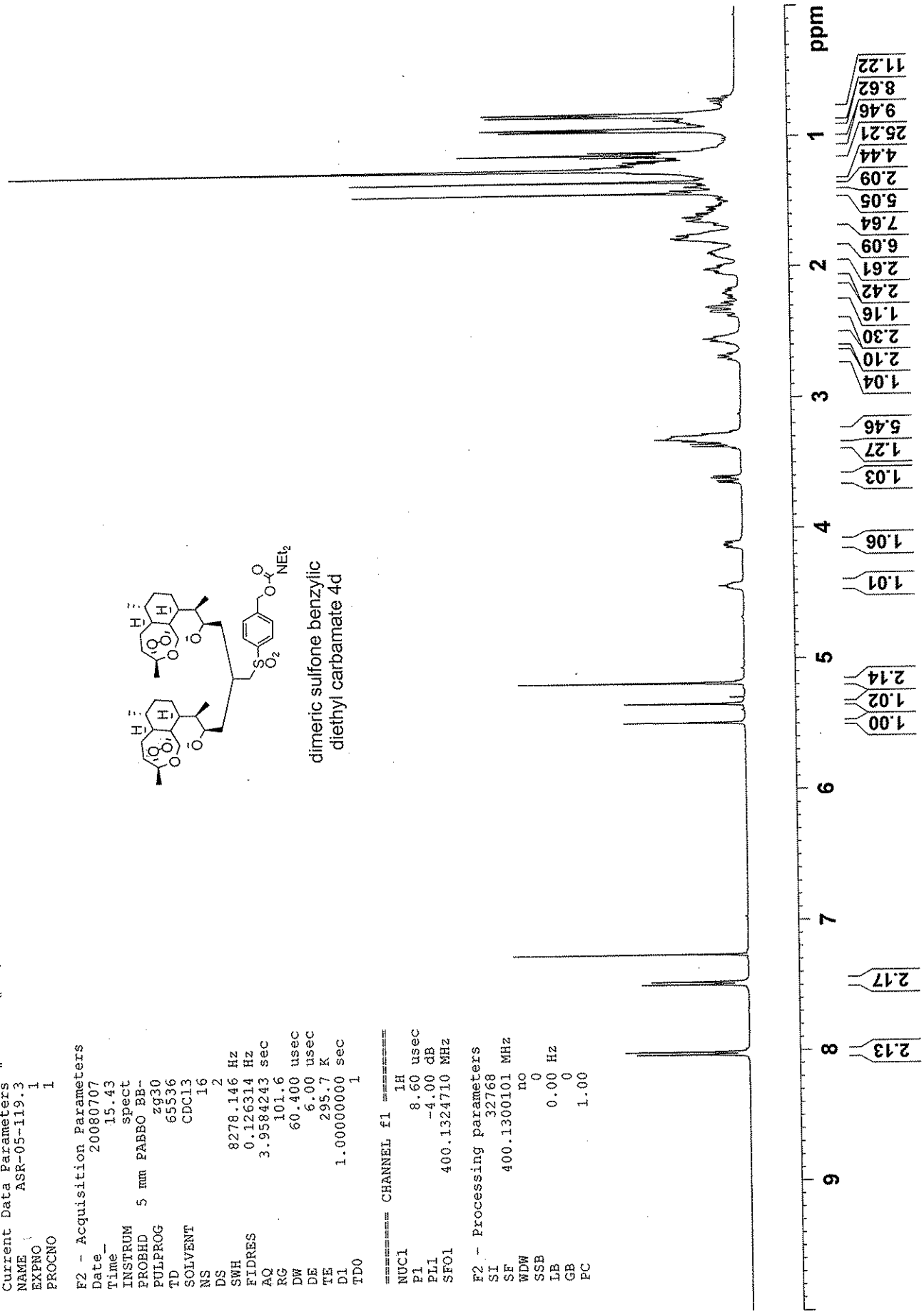
F2 - Acquisition Parameters
 Date 20080707
 Time 15.43
 INSTRUM spect
 PROBD 5 mm PABBO BB-
 PULPROG zg30
 TD 65536
 SOLVENT CDC13
 NS 16
 DS 2
 SWH 8278.146 Hz
 FIDRES 0.126314 Hz
 AQC 3.9384243 sec
 RG 101.6
 DW 60.400 usec
 DE 6.00 usec
 TE 295.7 K
 D1 1.00000000 sec
 TD0 1



dimeric sulfone benzylic diethyl carbamate 4d

==== CHANNEL f1 =====
 NUC1 1H
 P1 8.60 usec
 PL1 -4.00 dB
 SF01 400.1324710 MHz

F2 - Processing parameters
 SI 32768
 SF 400.1300101 MHz
 WDW no
 SSB 0
 LB 0.00 Hz
 GB 0
 PC 1.00



Current Data Parameters
 NAME ASR-05-119.2
 EXPNO 3
 PROCNO 1

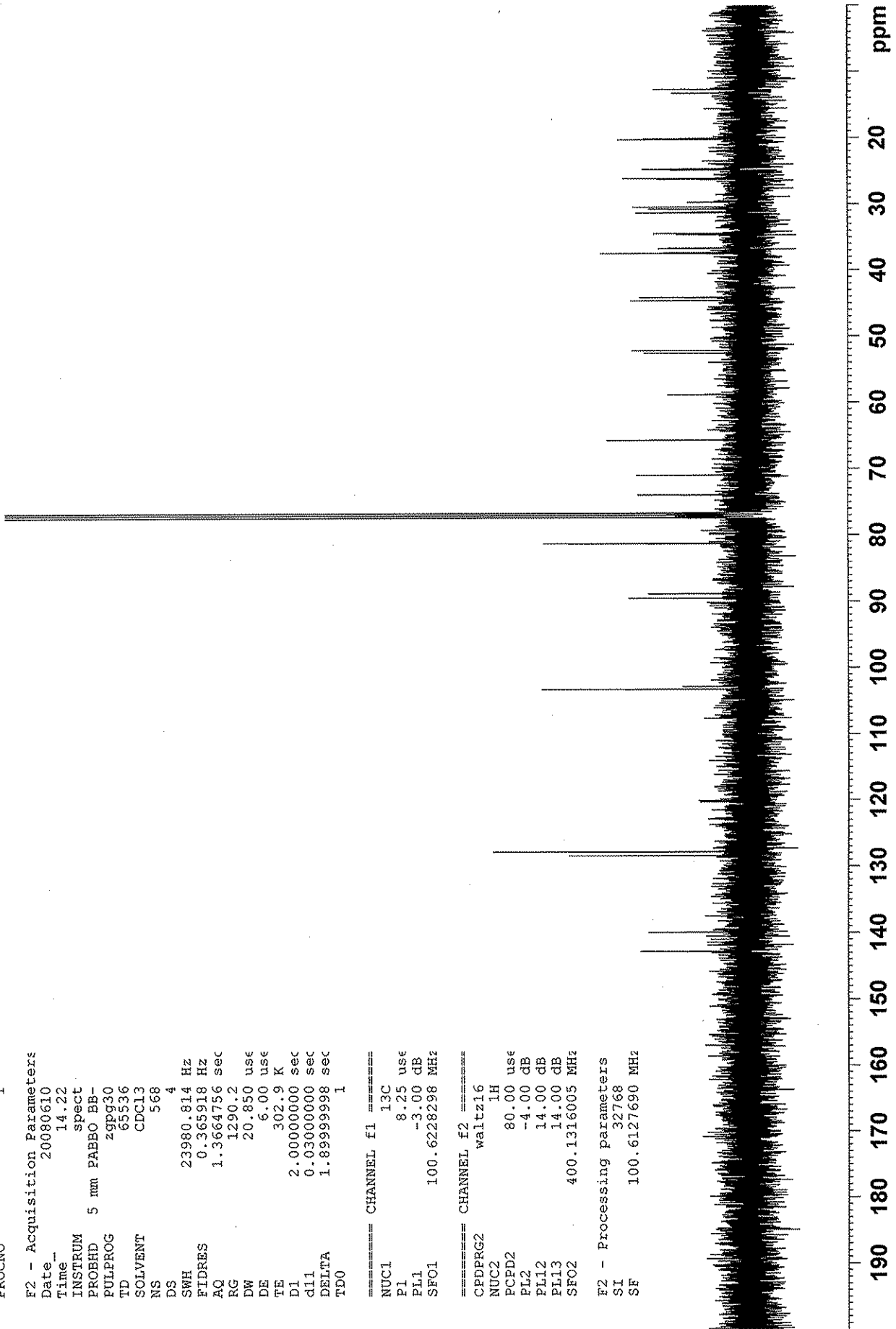
F2 - Acquisition Parameters
 Date 20080610
 Time 14.22
 INSTRUM spect
 PROBD 5 mm PABBO BB-
 PULPROG zgpg30
 TD 63536
 SOLVENT CDC13
 NS 568
 DS 4
 SWH 23980.814 Hz
 FIDRES 0.365918 Hz
 AQ 1.3664756 sec
 RG 1290.2
 DW 20.850 usec
 DE 6.00 usec
 TE 302.9 K
 D1 2.00000000 sec
 d11 0.03000000 sec
 DELTA 1.89999998 sec
 TDO 1

==== CHANNEL f1 =====
 NUC1 13C
 P1 8.25 usec
 PL1 -3.00 dB
 SFO1 100.6228298 MHz

==== CHANNEL f2 =====
 CPDPRG2 waltz16
 NUC2 1H
 PCPD2 80.00 usec
 PL2 -4.00 dB
 PL12 14.00 dB
 PL13 14.00 dB
 SFO2 400.1316005 MHz

F2 - Processing parameters
 SI 32768
 SF 100.6127690 MHz

142.85
 139.96
 127.83
 103.27
 102.86
 89.51
 88.83
 81.29
 81.23
 77.32
 77.21
 77.01
 76.69
 73.93
 70.97
 65.69
 58.84
 52.56
 52.17
 44.59
 44.12
 37.44
 37.33
 36.68
 36.64
 34.57
 34.43
 31.29
 31.23
 31.18
 30.72
 30.43
 26.22
 26.10
 24.81
 24.77
 24.74
 24.68
 20.23
 20.09
 13.24
 12.65



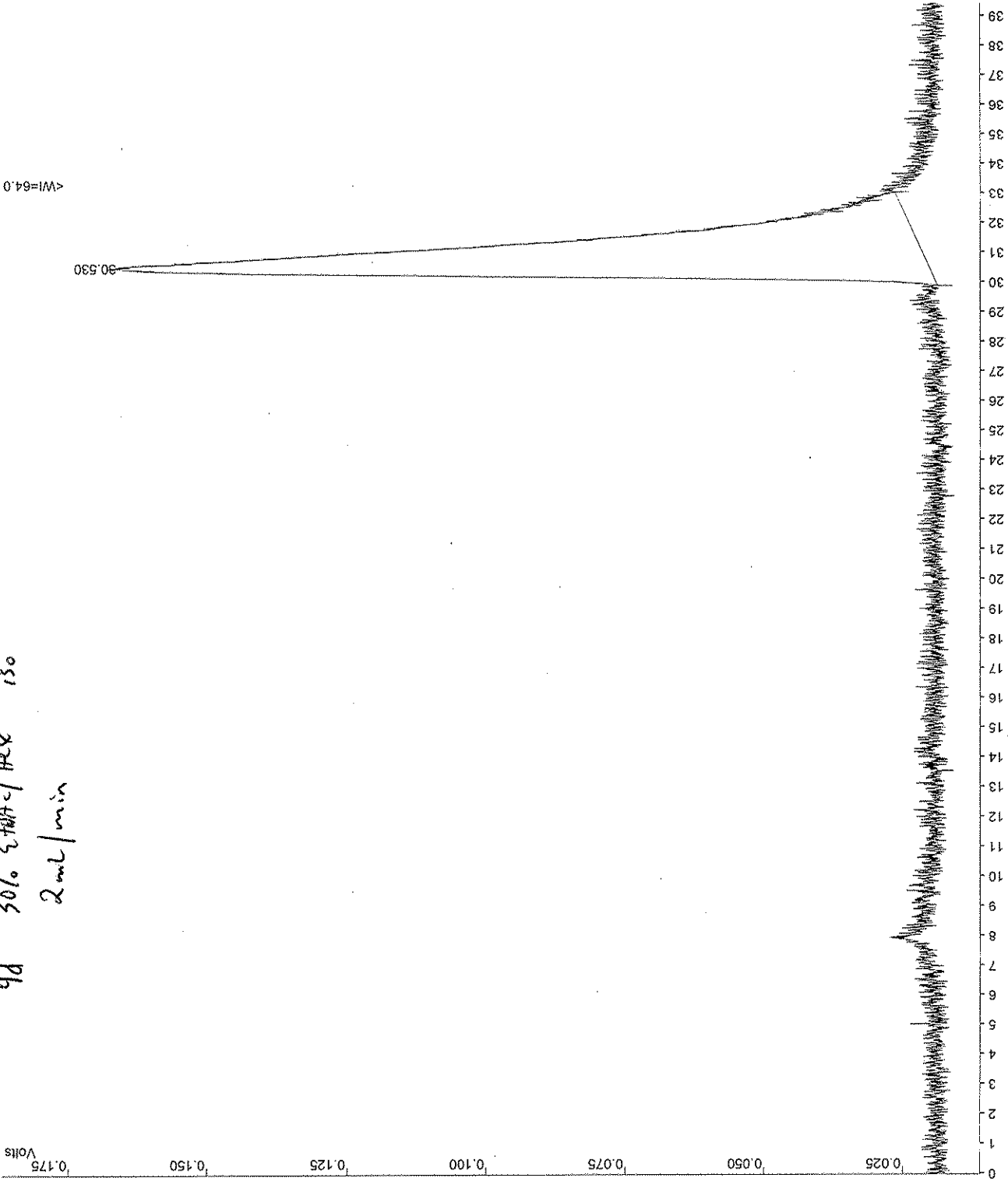
Title : ASR-05-119-tracel
 Run File : c:\star\data\asr\asr-05-21-2006
 Method File : asr-05-21-2006-1.mth
 Sample ID : Manual Sample

Injection Date: 7/18/2008 10:37 AM Calculation Date: 7/18/2008 11:24 AM

Operator : ksp
 Detector Type: Prostar/Dynamax (2 Volts)
 Workstation:
 Instrument : Varian Star #1
 Channel : 1 = 320
 Bus Address : 24
 Sample Rate : 5.00 Hz
 Run Time : 39.453 min

** LC Workstation Version 6.30 ** 02831-72D0-AE7-0225 **

Chart Speed = 0.50 cm/min Attenuation = 288
 Start Time = 0.000 min End Time = 39.453 min Min / Tick = 1.00
 Zero Offset = -6%



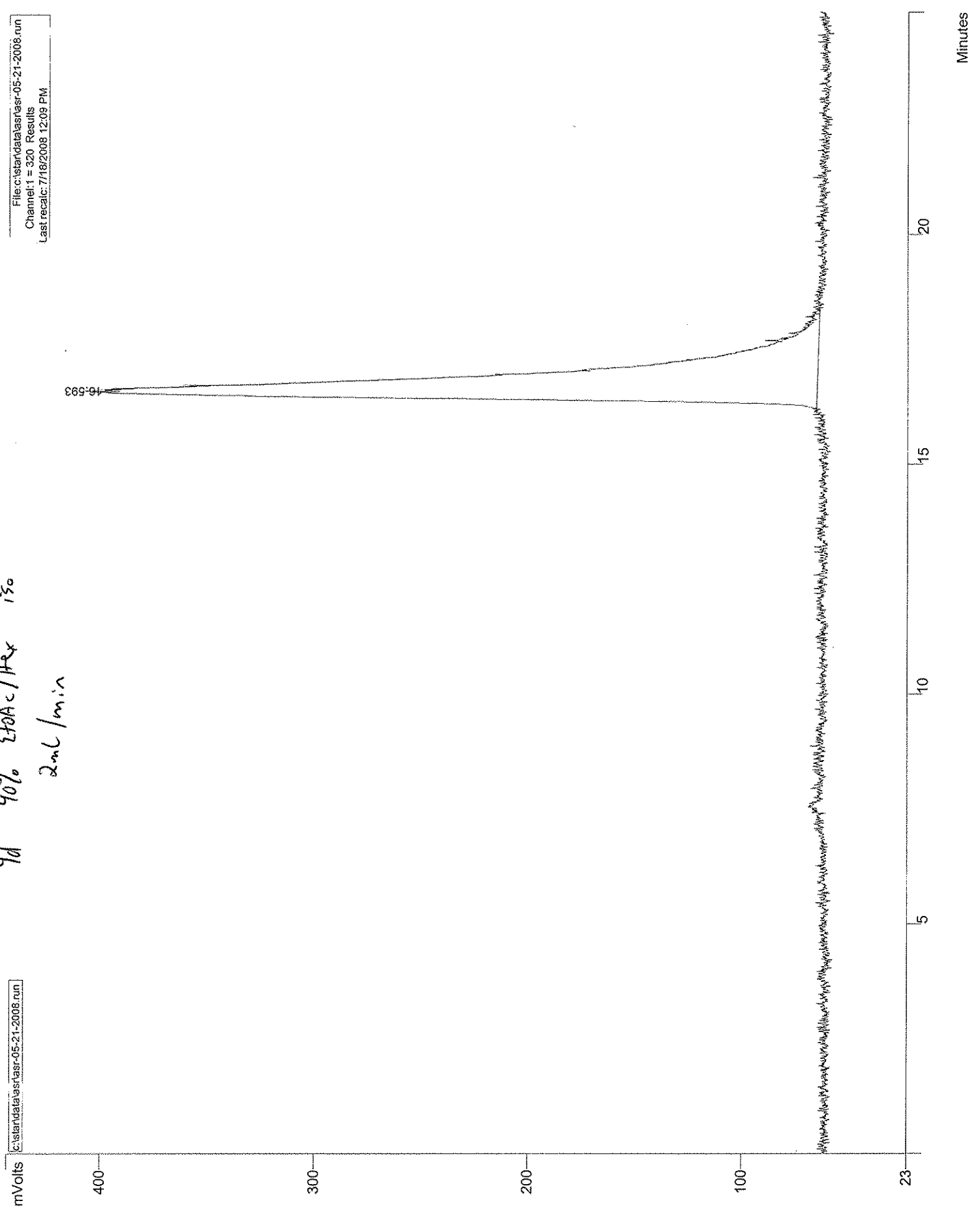
pd 30% EtAc/Hex iso
 2ml/min

<Wt=64.0

4d 40% EtOAc/Hex iso
2ml/min

C:\star\data\star\star-05-21-2008.run

File: c:\star\data\star\star-05-21-2008.run
Channel: 1 = 320 Results
Last recal: 7/18/2008 12:09 PM



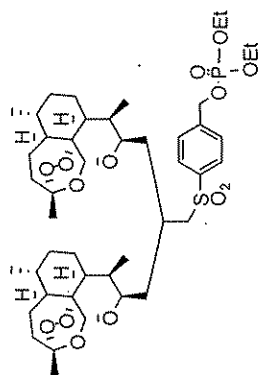
0.824
0.830
0.843
0.848
0.880
0.889
0.913
0.945
0.959
1.210
1.223
1.237
1.255
1.281
1.306
1.308
1.310
1.312
1.324
1.326
1.328
1.330
1.341
1.345
1.353
1.391
1.437
1.540
1.553
1.574
1.599
1.612
1.630
1.655
1.663
1.682
1.733
1.741
1.778
1.789
1.899
1.907
1.917
1.925
2.023
2.031
2.045
2.213
2.347
2.531
2.548
2.565
3.373
3.390
3.609
3.622
4.086
4.089
4.096
4.099
4.103
4.106
4.114
4.117
4.120
4.124
4.134
4.138
4.141
4.141
4.152
4.155
4.158
4.188
4.246
4.486
4.602
4.719
4.834
4.959

Current Data Parameters
NAME ASR-05-123.2
EXPNO 1
PROCNO 1

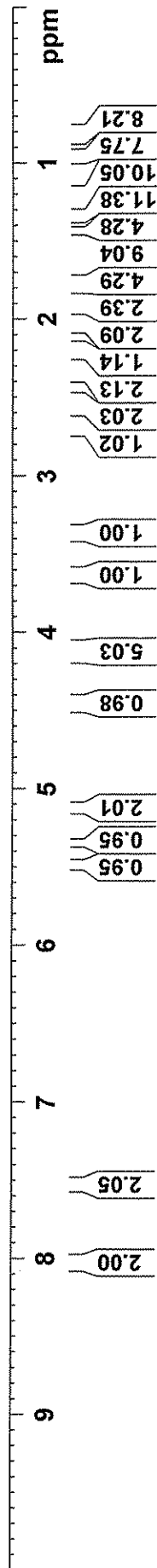
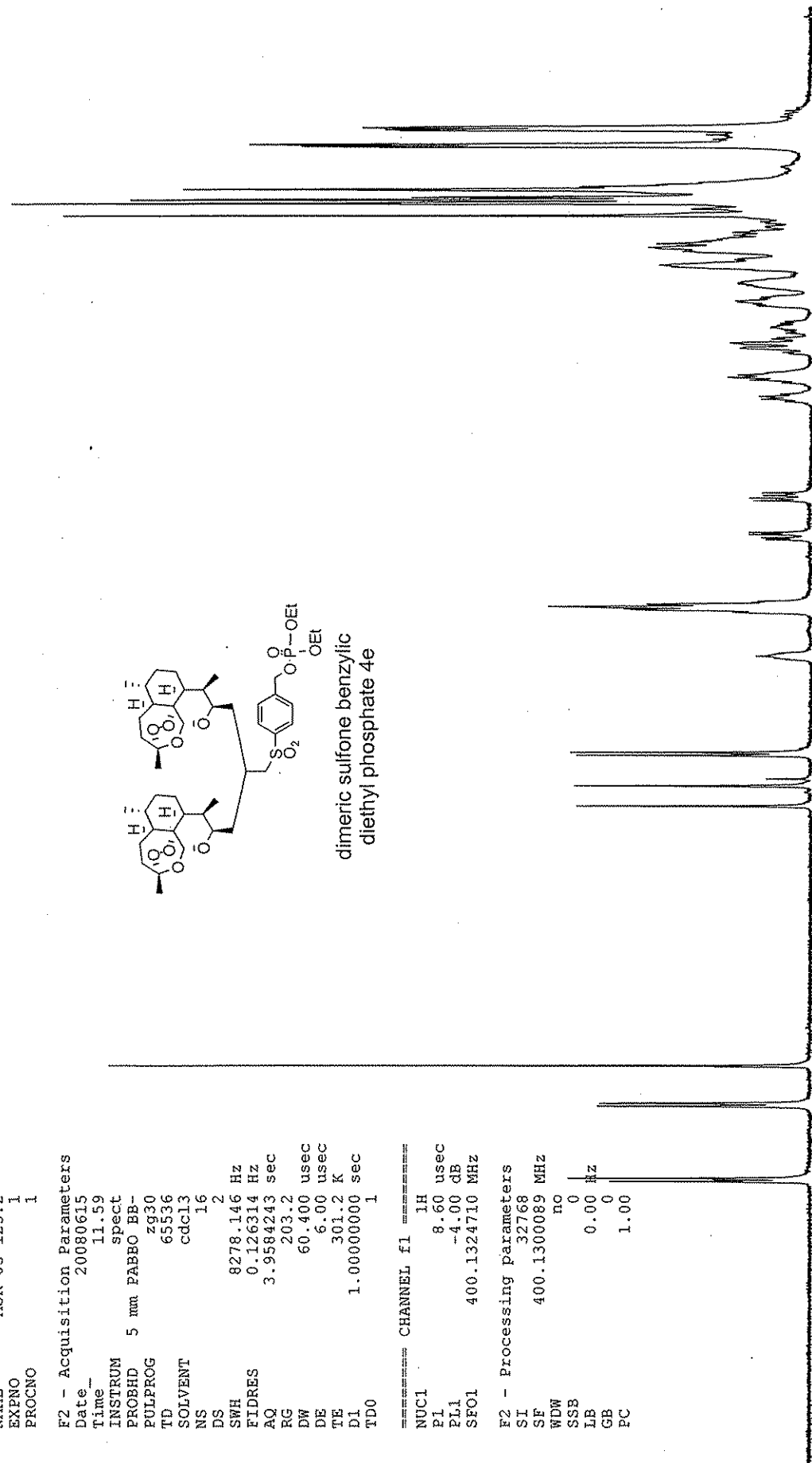
F2 - Acquisition Parameters
Date_ 20080615
Time 11.59
INSTRUM spect
PROBHD 5 mm PABBO BB-
PULPROG zg30
TD 65536
SOLVENT cdcl3
NS 16
DS 2
SWH 8278.146 Hz
FIDRES 0.126314 Hz
AQ 3.9584243 sec
RG 203.2
DW 60.400 usec
DE 6.00 usec
TE 301.2 K
D1 1.00000000 sec
TD0 1

===== CHANNEL f1 =====
NUC1 1H
P1 8.60 usec
PL1 -4.00 dB
SFO1 400.1324710 MHz

F2 - Processing parameters
SI 32768
SF 400.1300089 MHz
WDW no
SSB 0
LB 0.00 Hz
GB 0
PC 1.00



dimeric sulfone benzylic
diethyl phosphate 4e



Current Data Parameters
 NAME ASR-05-123.2
 EXPNO 2
 PROCNO 1

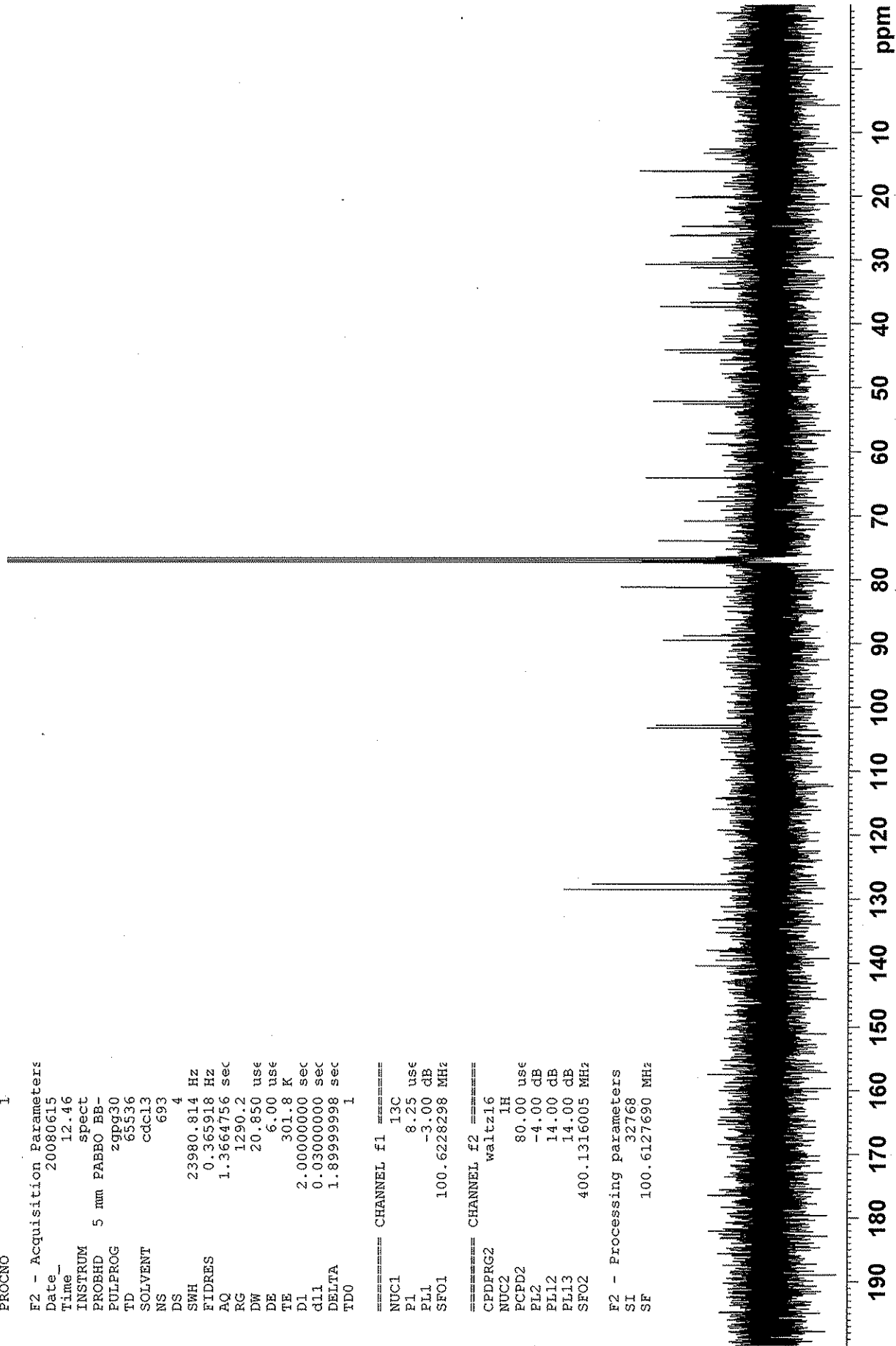
F2 - Acquisition Parameters
 Date_ 20080615
 Time 12.46
 INSTRUM spect
 PROBHD 5 mm PABBO BB-
 PULPROG zgpg30
 TD 65536
 SOLVENT cdc13
 NS 693
 DS 4
 SWH 23980.814 Hz
 FIDRES 0.365918 Hz
 AQ 1.3664756 sec
 RG 1290.2
 DW 20.850 use
 DE 6.00 use
 TE 301.8 K
 D1 2.0000000 sec
 d11 0.0300000 sec
 DELTA 1.89999998 sec
 TDO 1

==== CHANNEL f1 =====
 NUC1 13C
 P1 8.25 use
 PL1 -3.00 dB
 SFO1 100.6228298 MHz

==== CHANNEL f2 =====
 CPDPRG2 waltzi6
 NUC2 1H
 PCPD2 80.00 use
 PL2 -4.00 dB
 PL12 14.00 dB
 PL13 14.00 dB
 SFO2 400.1316005 MHz

F2 - Processing parameters
 SI 32768
 SF 100.6127690 MHz

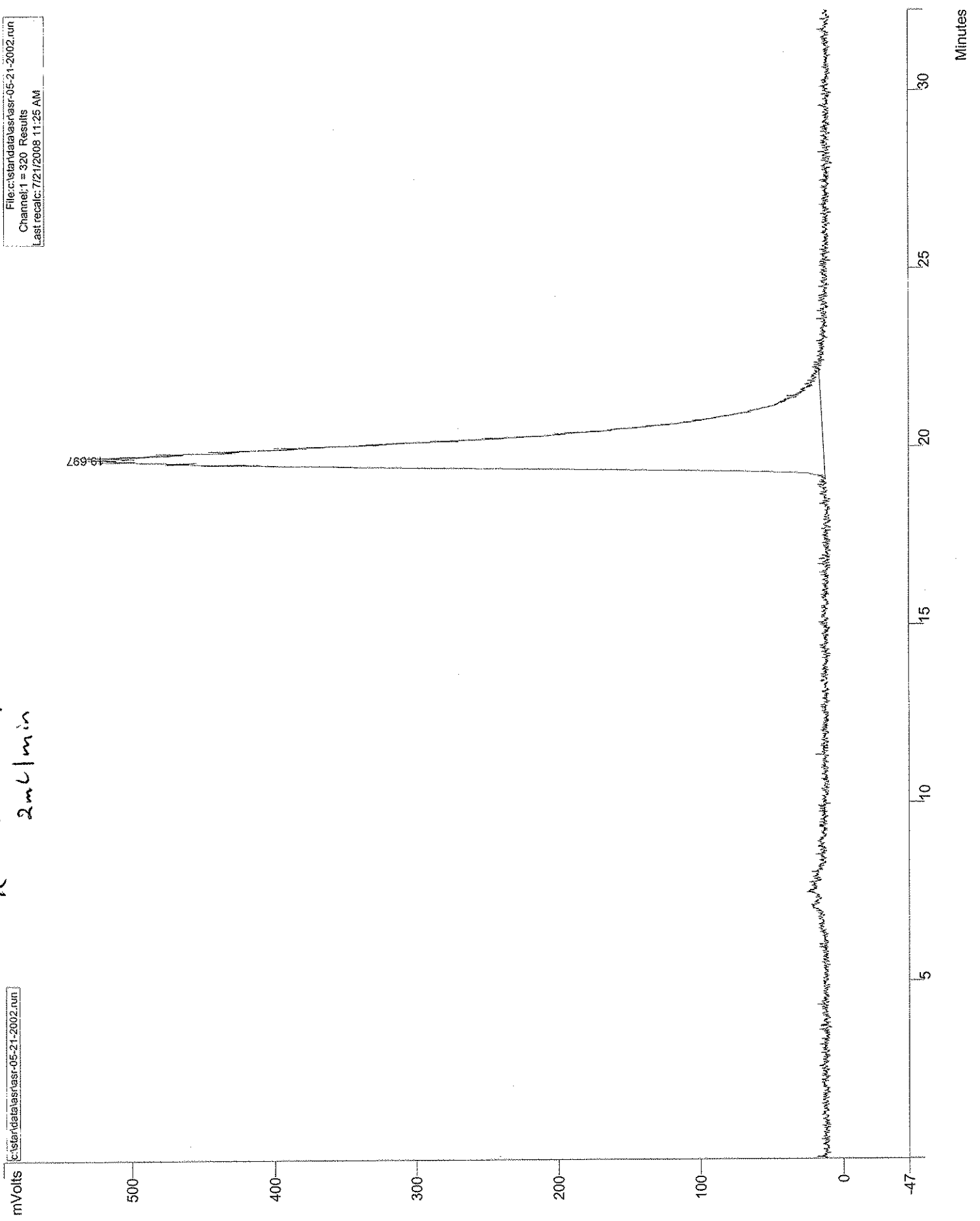
140.46
 138.04
 128.54
 127.69
 103.28
 102.86
 89.55
 88.84
 81.29
 81.24
 73.96
 70.85
 67.75
 67.70
 67.09
 64.11
 64.06
 58.79
 57.18
 57.13
 52.55
 52.15
 44.57
 44.09
 37.45
 37.35
 36.67
 36.64
 34.42
 32.19
 31.28
 31.25
 30.72
 30.43
 29.69
 26.24
 26.12
 24.75
 20.24
 20.10
 16.15
 16.08
 13.24
 12.63



40 80% EtOAc/Hex iso.
2 mL/min

File: c:\standata\asr\asr-05-21-2002.run
Channel: 1 = 320 Results
Last recal: 7/21/2008 11:25 AM

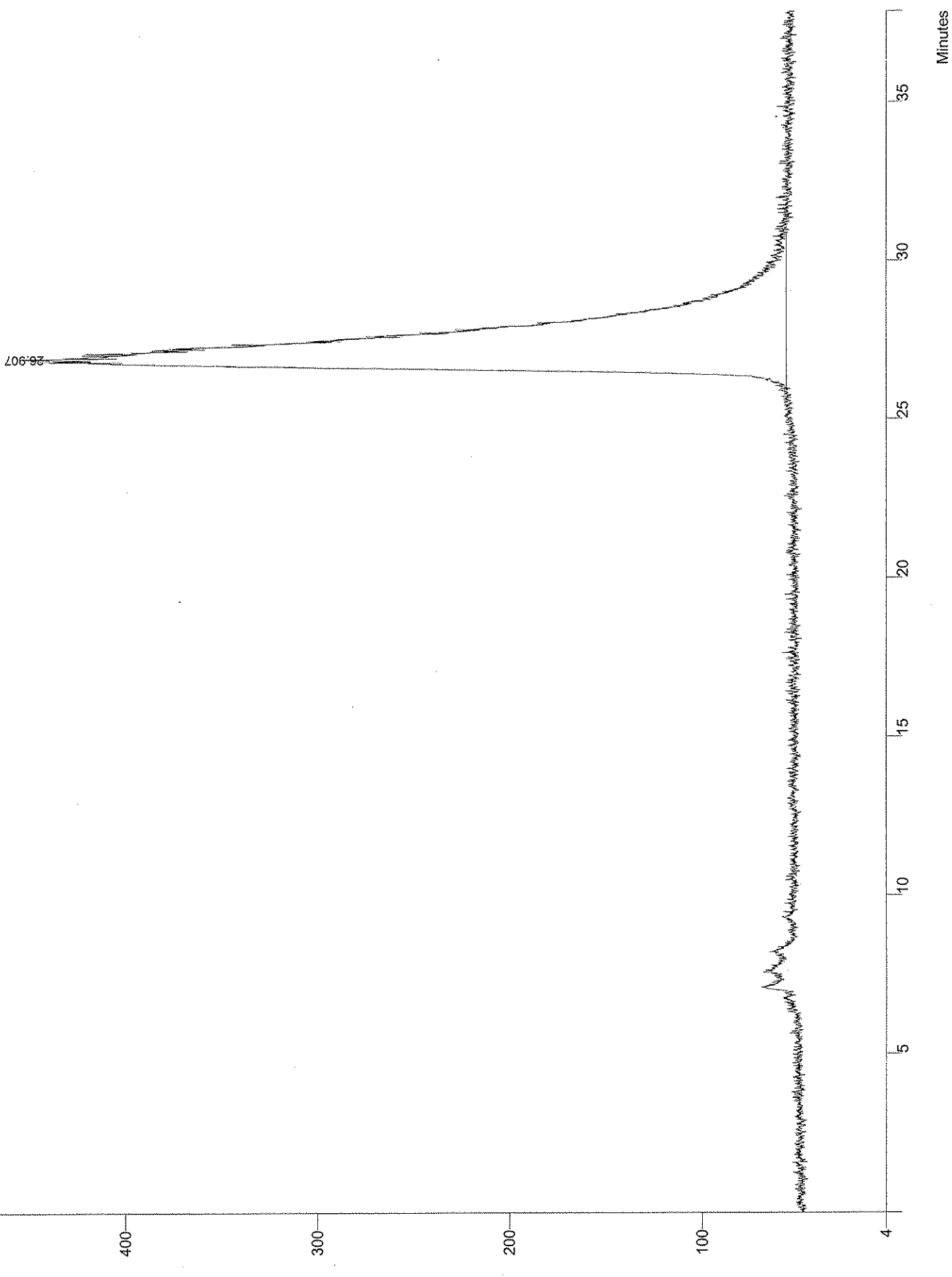
c:\standata\asr\asr-05-21-2002.run



4e 70% EtOAc/Hex 150
2ml/min

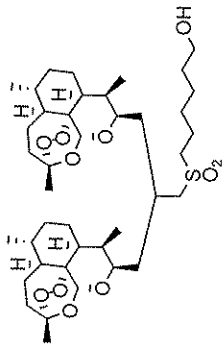
mVolts

File: c:\data\data\kashsr-05-21-2014.run
Channel: 1 = 320 Results
Last recal: 7/21/2008 10:17 AM



Current Data Parameters
 NAME ASR-05-101.6
 EXPNO 2
 PROCNO 1

F2 - Acquisition Parameters
 Date_ 20080617
 Time 14.28
 INSTRUM spect
 PROBHD 5 mm PABBO BB-
 PULPROG zgpg30
 TD 65536
 SOLVENT CDCl3
 NS 554
 DS 4
 SWH 23980.814 Hz
 FIDRES 0.365918 Hz
 AQ 1.3664756 sec
 RG 1149.4
 DW 20.850 use
 DE 6.00 use
 TE 297.6 K
 D1 2.0000000 sec
 d11 0.0300000 sec
 DELTA 1.89999998 sec
 TD0 1



dimeric sulfone hexanol 4f

==== CHANNEL f1 =====
 NUC1 13C
 P1 8.25 use
 PL1 -3.00 dB
 SFO1 100.6228298 MHz

==== CHANNEL f2 =====
 CPDPRG2 waltzi6
 NUC2 1H
 PCPD2 80.00 use
 PL2 -4.00 dB
 PL12 14.00 dB
 PL13 14.00 dB
 SFO2 400.1316005 MHz

F2 - Processing parameters
 SI 32768
 SF 100.6127690 MHz

103.30
102.94
89.68
89.68
88.84
81.32
81.22
77.34
77.22
77.02
76.70
73.68
70.30
62.67
55.70
53.04
52.55
52.08
44.53
44.10
37.48
37.27
36.68
36.61
34.56
34.40
32.31
31.90
31.59
30.55
30.30
29.81
29.70
28.16
26.18
26.10
25.12
24.82
24.78
24.73
24.65
21.58
20.27
20.09
13.25
12.71



7.26
7.28
7.30
7.32
7.34
7.36
7.38
7.40
7.42
7.44
7.46
7.48
7.50
7.52
7.54
7.56
7.58
7.60
7.62
7.64
7.66
7.68
7.70
7.72
7.74
7.76
7.78
7.80
7.82
7.84
7.86
7.88
7.90
7.92
7.94
7.96
7.98
8.00
8.02
8.04
8.06
8.08
8.10
8.12
8.14
8.16
8.18
8.20
8.22
8.24
8.26
8.28
8.30
8.32
8.34
8.36
8.38
8.40
8.42
8.44
8.46
8.48
8.50
8.52
8.54
8.56
8.58
8.60
8.62
8.64
8.66
8.68
8.70
8.72
8.74
8.76
8.78
8.80
8.82
8.84
8.86
8.88
8.90
8.92
8.94
8.96
8.98
9.00

Current Data Parameters

NAME ASR-05-101.6
EXFNO 1
PROCNO 1

F2 - Acquisition Parameters

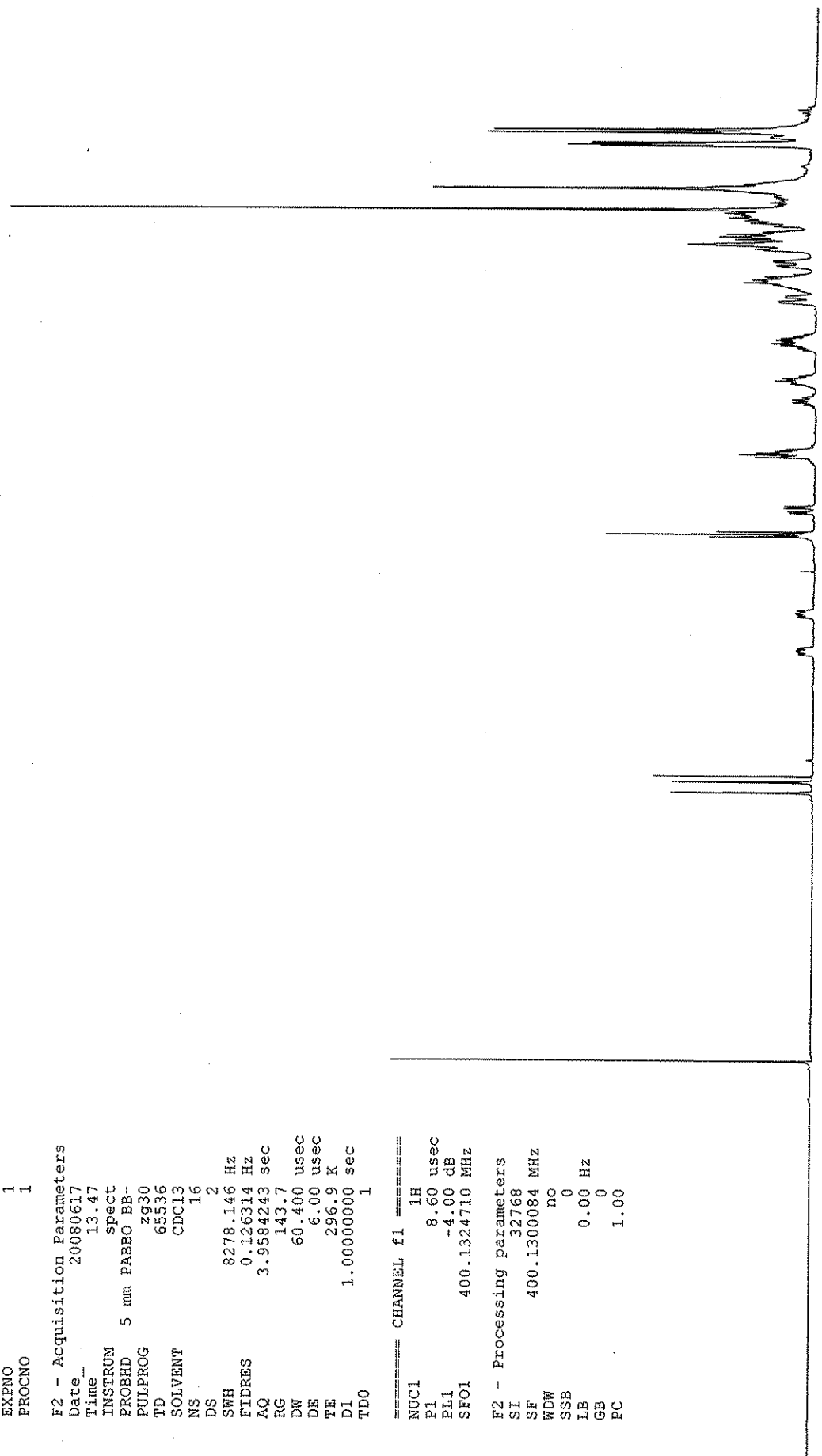
Date 20080617
Time 13.47
INSTRUM spect
PROBHD 5 mm PABBO BB-
PULPROG zg30
TD 65536
SOLVENT CDC13
NS 16
DS 2
SWH 8278.146 Hz
FIDRES 0.126314 Hz
AQ 3.9584243 sec
RG 143.7
DW 60.400 usec
DE 6.00 usec
TE 296.9 K
D1 1.00000000 sec
TDO 1

===== CHANNEL f1 =====

NUC1 1H
P1 8.60 usec
PL1 -4.00 dB
SFO1 400.1324710 MHz

F2 - Processing parameters

SI 32768
SF 400.1300084 MHz
WDW no
SSB 0
LB 0.00 Hz
GB 0
PC 1.00



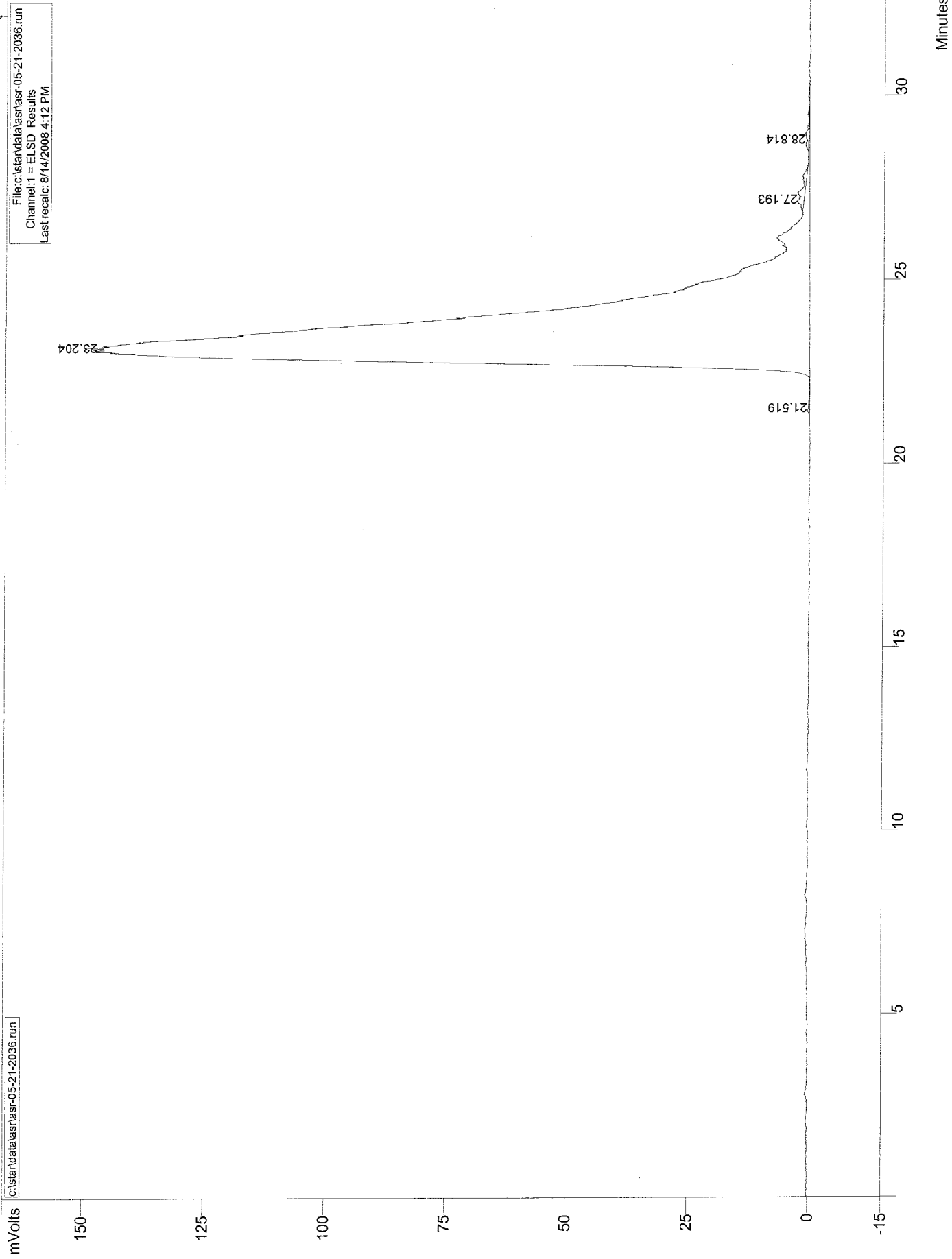
ppm

8.86
7.63
13.91
17.67
11.33
2.63
5.66
2.23
3.26
2.09
1.06
3.22
1.07
2.52
1.09
1.03
1.06
1.00

1
2
3
4
5
6
7
8
9

4f 60% EtOH/H₂O iso.
2 ml/min ELS detector

File: c:\standata\asnr-05-21-2036.run
Channel: 1 = ELSD Results
Last recal: 8/14/2008 4:12 PM



4f
70% EtOH/Hex iso
2 mL/min ELS detector

